

Insert type Relief, direct acting adjustable, anti-cavitation function

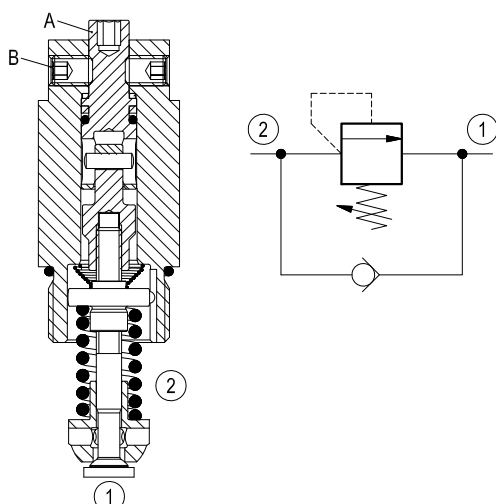
Special cavity, 870

VRA1.080

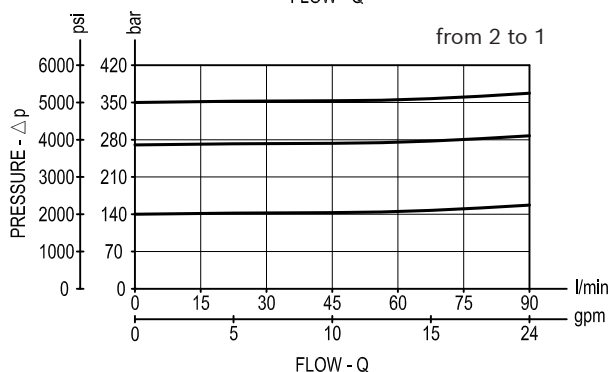
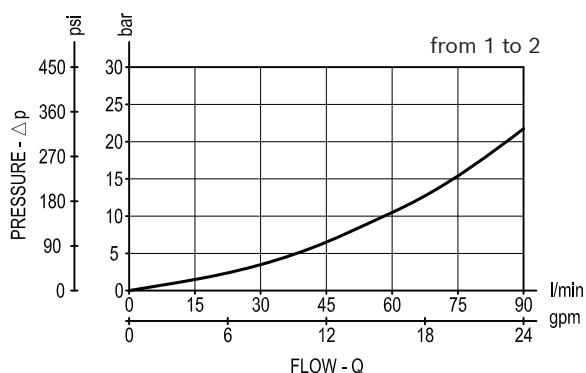
OT.M6.04 - X - 99 - Z



Dimensions



Performance



Description

Flow is free from 1 to 2 until pressure increases to meet the selected valve setting, allowing relief flow through port 1 to tank. This valve combine the typical function of shock relief valve (direct acting) and anticavitation function through the check valve. The direct action and the specific design allow a very fast opening and closing.

Note: to obtain a good leak proof performance coin the cavity seat using a loose valve seat (P/N 0F.S0.011) as a coining tool.

Please consult factory for any question.

Please be careful to the following instructions:

- 1) Screw the valve into the cavity using the mentioned installation torque;
- 2) Adjust the setting using the stem "A";
- 3) Once the valve is adjusted to the required pressure setting, lock the screw "B". Be careful to make the pressure setting adjustment when the screw "B" is loose; block the screw with torque 2-4 Nm (1.5-3 ft-lbs) only when the pressure setting is adjusted.

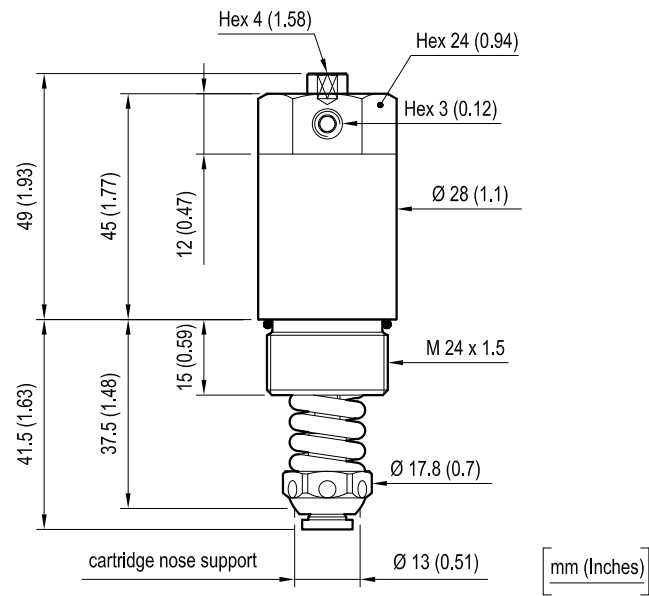
Technical data

Max. operating pressure	bar (psi)	400 (5800)
Max. flow	l/min. (gpm)	90 (24)
Max. internal leakage (*)	drops/min.	30
Fluid temperature range	°C (°F)	-30 to 100 (-22 to 212)
Installation torque	Nm (ft-lbs)	50-55 (37-41)
Weight	kg (lbs)	0.18 (0.4)
Special cavity		870 see data sheet RE 18325-75
Lines bodies and standard assemblies		Please refer to section "Hydraulic integrated circuit" or consult factory
Seal kit (**)	code material no.	RG0870020000100 R931002407
Fluids		Mineral-based or synthetics with lubricating properties at viscosities of 10 to 500 mm ² /s (cSt)
Recommended degree of fluid contamination		Nominal value max. 10µm (NAS 8) ISO 4406 20/18/15
Installation		No restrictions
Other Technical Data		See data sheet RE 18350-50

(*) at 80% of pressure setting

(**) Only external seals for 10 valves

Dimensions



Ordering code

OT.M6.04	X	99	Z	*
----------	---	----	---	---

Insert type - Relief, direct acting
adjustable, anti-cavitation function

Adjustments

= 03 Adjustable

Special cavity, 870

Series 0/A to L
unchanged performances and dimensions

	SPRINGS	
	Adj. pressure range bar (psi)	Pressure increase bar/turn (psi/turn)
= 10	90-140 (1300-2000)	23 (334)
= 20	140-270 (2000-3900)	56 (812)
= 35	270-350 (3900-5000)	63 (914)
= 40	350-400 (5000-5800)	76 (1102)

Type	Material number
OTM604039910000	R931002289
OTM604039920000	R931002290
OTM604039935000	R931002291
OTM604039940000	R931002292

Type	Material number