

Relief, direct acting (guided) poppet type

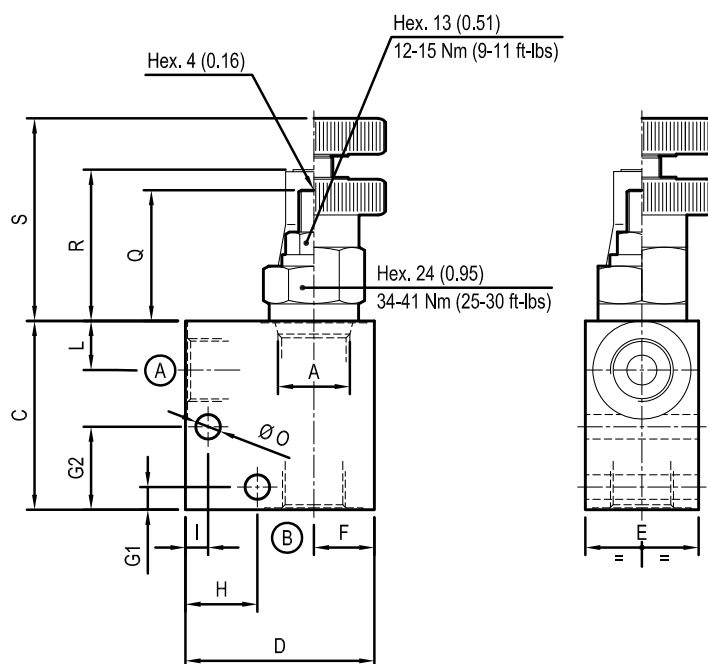
Common cavity

Cartridge style in manifold

VSBN-08A-C

OR.01 - K - X - Y - Z - W

Dimensions



Technical data

Max flow:	up to 20 l/min	(5 gpm)
Max operating pressure for steel body:	350 bar	(5000 psi)
Max operating pressure for aluminium body:	210 bar	(3000 psi)

To order only manifold see data sheet RE 18325-85

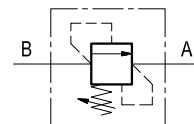
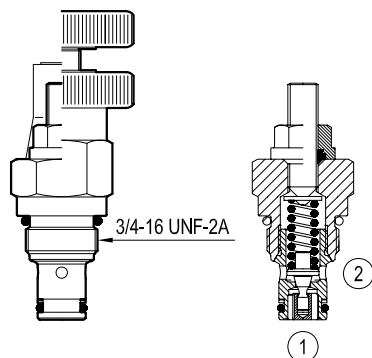


Table "Y"

[illegible]

Cartridge style



$K = 49$



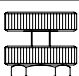

Designed to provide enhanced stability at all flows and pressures.

SIZE 08

Table "K"

			K				
CARTRIDGE CODE	04	11	49	X	56	Z	VSBN-08A

Table "X"

X		ADJUSTMENTS	OPTIONS	
03	Leakproof hex. socket screw		 Ordering code X=03 11.04.23.002 X=73 11.04.23.004	
04	Handknob and locknut			
73	O-Ring seal on adjust screw			

CARTRIDGE TECHNICAL DATA

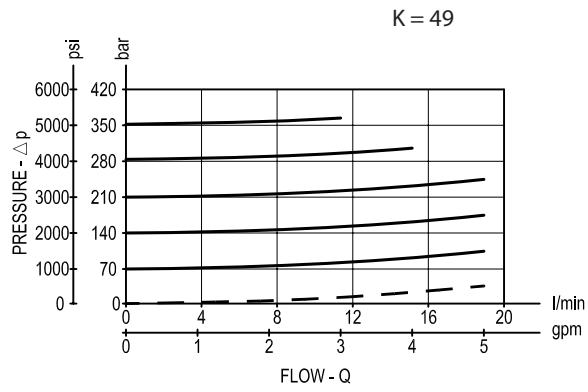
Common cavity: CA-08A-2N

For other details see data sheet RE 18318-04

Table "Z"

[illegible]

Performance graphs



Ordering code

OR.01		49	X	Y	Z	W
Manifold with relief direct acting (guided) poppet type						Manifold material
						= 00 Aluminium manifold
						= S0 Steel manifold
Cartridge style - Common cavity						Settings - Springs (see table Z on page 2)
Cartridge style - Adjustments (see table X on page 2)						Manifold style - Dimensions and port sizes (see table Y on page 1)

Preferred types (readily available)

Type	Material number	Type	Material number
OR0149030210S0	R934001607		
OR0149030220S0	R934001616		
OR0149030235S0	R934001629		
OR014903020500	R934003368		
OR014903090500	R934003367		
OR014904023500	R934003496		

Further types available by request