

Flow control, restrictor

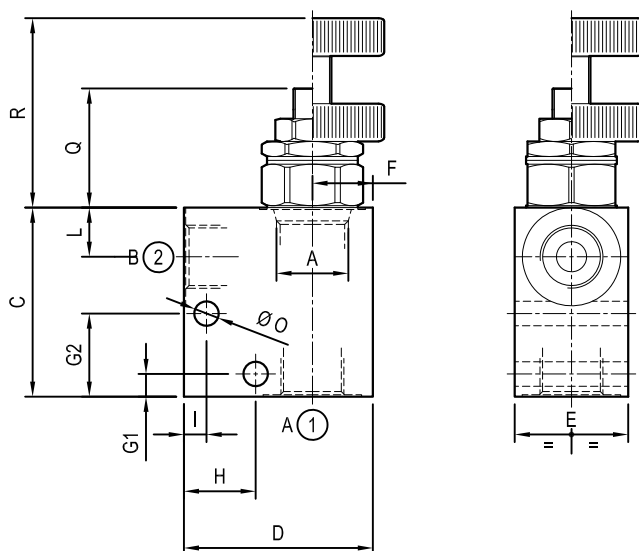
Common cavity

Cartridge style in manifold

ST-C-06-C

ON.01 - K - X - Y - 00 - W

Dimensions



Technical data

Max flow:	up to 40 l/min	(11 gpm)
Max operating pressure for steel body:	350 bar	(5000 psi)
Max operating pressure for aluminium body:	210 bar	(3000 psi)

To order only manifold see data sheet RE 18325-85

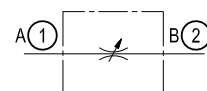
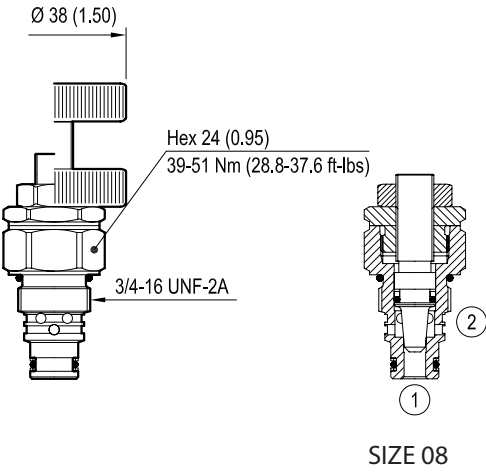


Table "Y"

[illegible]

Cartridge style



mm (inches)

Table “K”

CARTRIDGE CODE	K						
	OD	21	01	X	56	00	ST-C-06-C

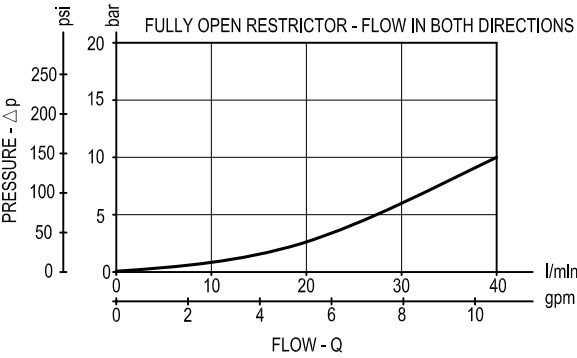
Table “X”

X	ADJUSTMENTS		
03	Leakproof hex. socket screw		
04	Handknob and locknut		

CARTRIDGE TECHNICAL DATA

Common cavity: CA-08A-2N
For other details see data sheet RE 18321-26

Performance graph



Ordering code

ON.01	K	X	Y	00	W
-------	---	---	---	----	---

Manifold with flow control,
restrictor

Cartridge style - Common cavity
(see table K on page 2)

Cartridge style - Adjustments
(see table X on page 2)

Manifold material

= 00	Aluminium manifold
------	--------------------

= S0	Steel manifold
------	----------------

Manifold style - Dimensions and port sizes
(see table Y on page 1)

Preferred types (readily available)

[illegible]

Further types available by request

[illegible]

