

## Needle restrictor, free reverse flow

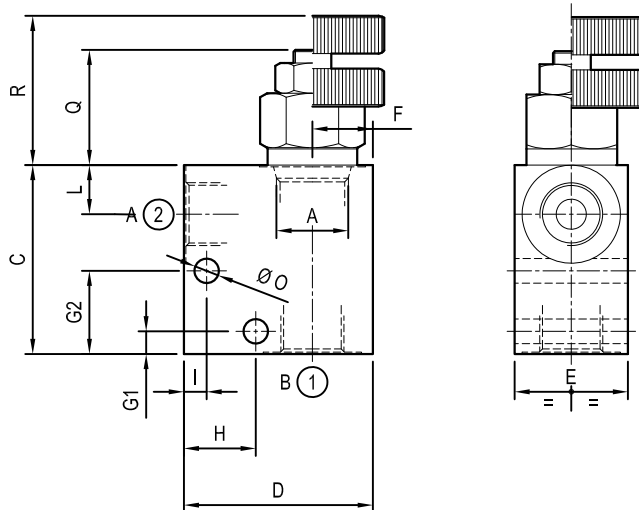
## Common cavity

## Cartridge style in manifold

STVU-08A

ON.03 - K - X - Y - 00 - W

## Dimensions



## Technical data

Max flow:	up to 40 l/min	(11 gpm)
Max operating pressure for steel body:	350 bar	(5000 psi)
Max operating pressure for aluminium body:	210 bar	(3000 psi)

To order only manifold see data sheet RE 18325-85

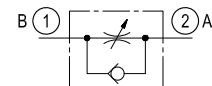


Table "Y"

[illegible]

Cartridge style

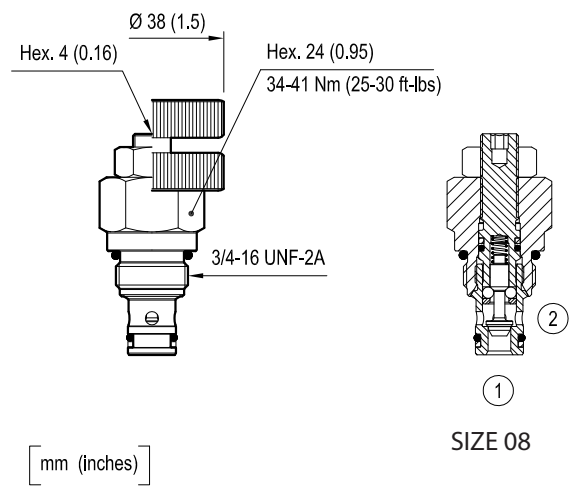


Table “K”

		K					
CARTRIDGE CODE	04	01	03	X	56	00	STVU-08A

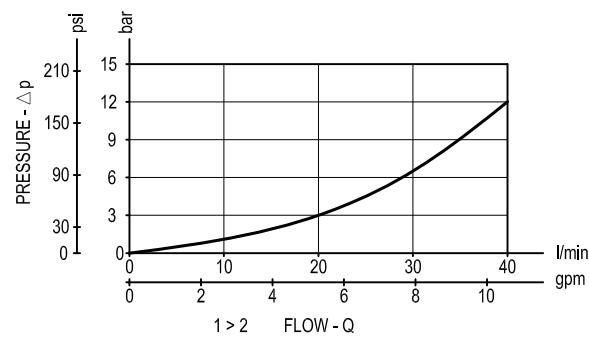
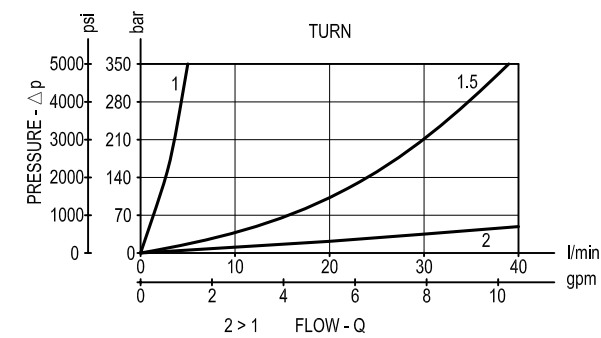
Table “X”

X	ADJUSTMENTS		
03	Leakproof hex. socket screw		
04	Handknob and locknut		

CARTRIDGE TECHNICAL DATA

Common cavity: CA-08A-2N  
For other details see data sheet RE 18321-10

Performance graphs



Ordering code

ON.03	K	X	Y	00	W
-------	---	---	---	----	---

Manifold with needle restrictor,  
free reverse flow

Cartridge style - Common cavity  
(see table K on page 2)

Cartridge style - Adjustments  
(see table X on page 2)

Manifold material

= 00	Aluminium manifold
------	--------------------

= S0	Steel manifold
------	----------------

Manifold style - Dimensions and port sizes  
(see table Y on page 1)

Preferred types (readily available)

[illegible]

Further types available by request

[illegible]

