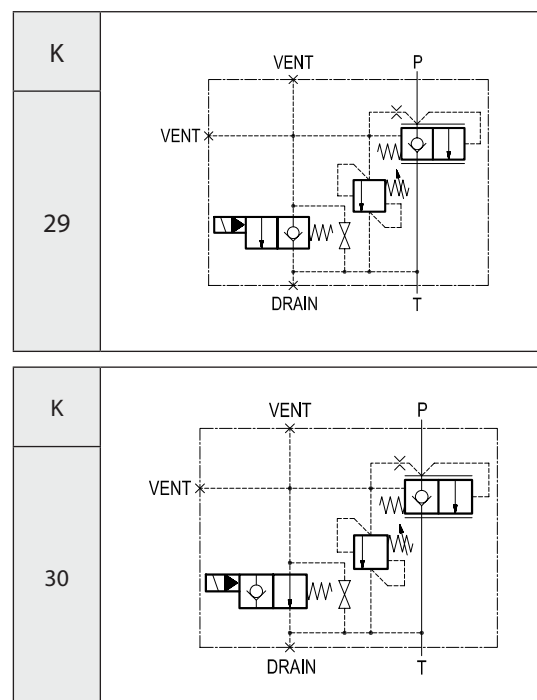
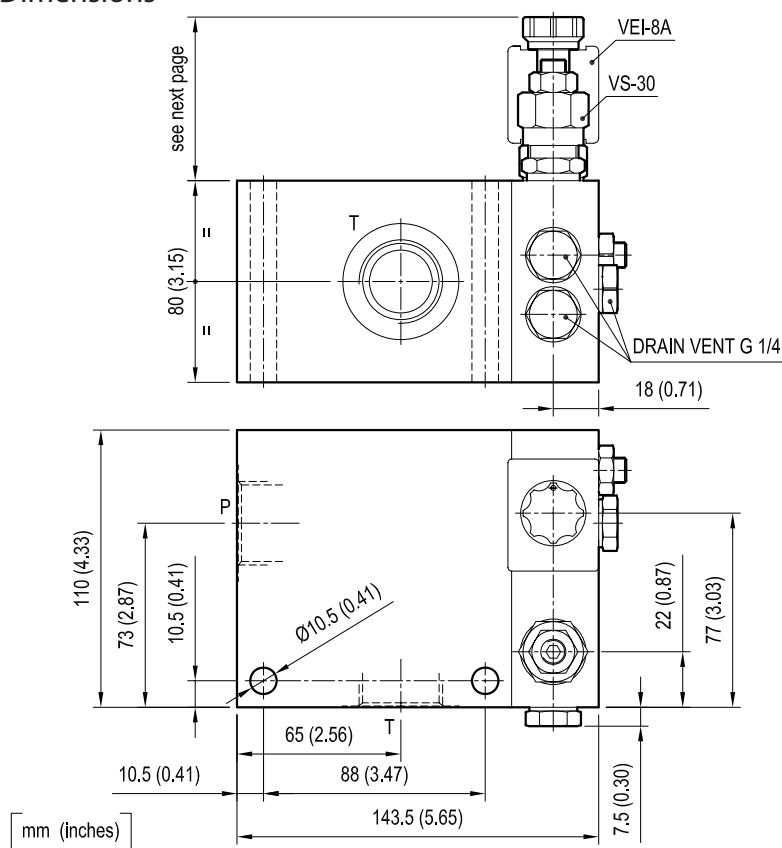


Standard integrated circuits solenoid operated ventable relief valve

VSP-25-VEI8A

OL - K - Y - Z - W - 00

Dimensions



Technical data

Max flow: up to 300 l/min (80 gpm)

Max operating pressure: 210 bar (3000 psi)

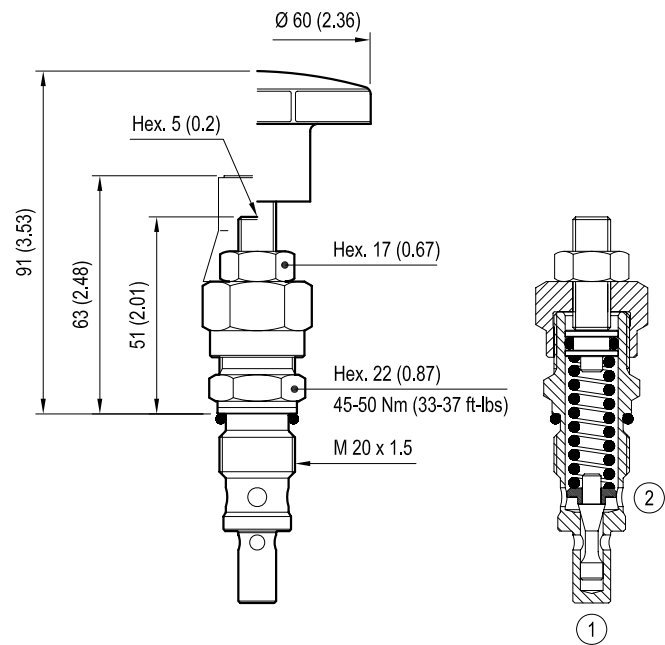
Standard manifolds in high strength aluminium.

For working pressure up to 350 bar (5000 psi) and for fatigue applications with any working pressure, steel manifolds are available upon request.


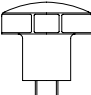
Weight: 3.2 kg (7.1 lbs)


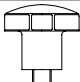
These integrated circuit contains one relief valve type VS-30 operating from P to T and one solenoid valve type VEI-8A (see next page).

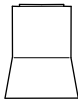
VS30 Cartridge valve (code 04.11.18.X.99.Z)



[mm (inches)]

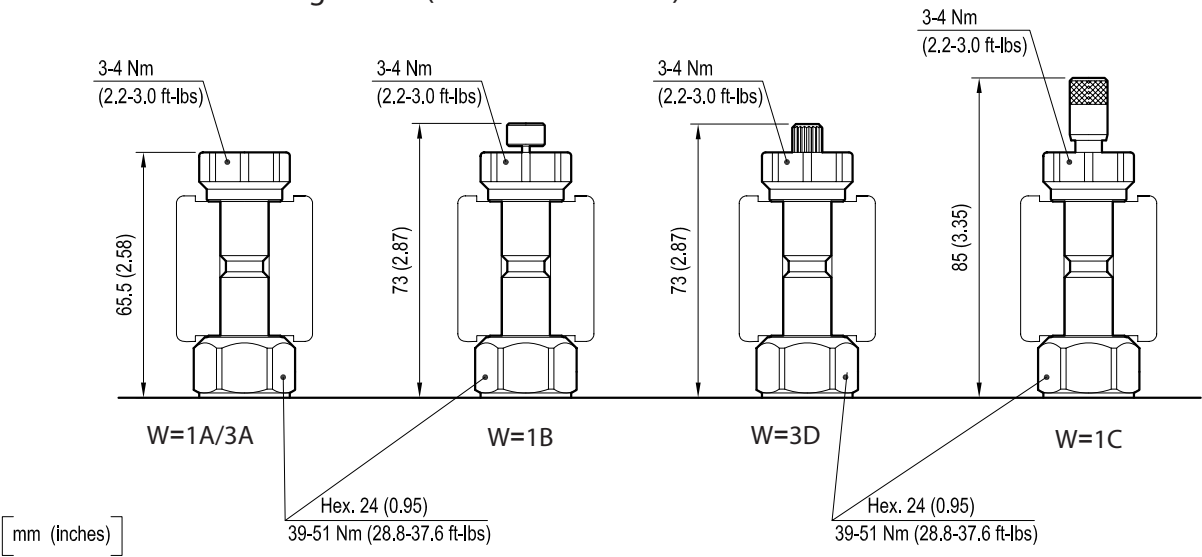
Z		VS-30 SETTING		
		Adj. pressure range bar (psi)	Press. increase bar/turn (psi/turn)	Std. setting bar (psi) (Q=5 l/min)
	01	5-50 (75-725)	12 (174)	50 (725)
	04	30-100 (435-1450)	24 (348)	100 (1450)
	07	50-210 (725-3000)	47 (682)	200 (2900)
	10	100-350 (1450-5000)	82 (1189)	350 (5000)
	02	5-50 (75-725)	12 (174)	50 (725)
	05	30-100 (435-1450)	24 (348)	100 (1450)
	08	50-210 (725-3000)	47 (682)	200 (2900)
	11	100-350 (1450-5000)	82 (1189)	350 (5000)

ADJUSTMENTS	
Leakproof hex. socket screw	
Handknob and locknut	

OPTIONS
 Tamper resistant cap 11.04.23.003

VS-30 TECHNICAL DATA
See table “Z”, for other details see data sheet RE 18318-23

VEI-8A Solenoid cartridge valve (code OD.15.K.18...)

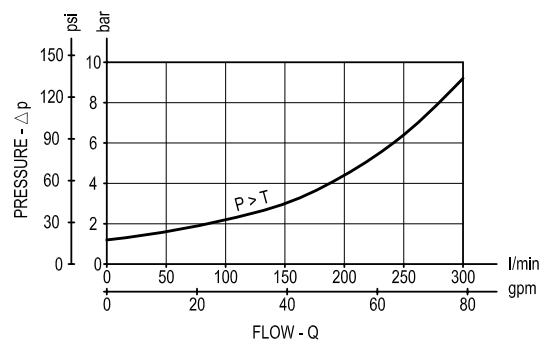


[mm (inches)]

W	MANUAL OVERRIDE OPTIONS	
	K = 29	K = 30
1A	/	No override
1B	/	Push style
1C	/	Push and twist style
3A	No override	/
3D	Knob style	/

VEI-8A TECHNICAL DATA		
Internal leakage:	max. 1cm ³ /min	(0.06 inch ³ /min)
Filtration:	25 µm nominal or better	
Minimum voltage required:	90% of nominal value	
Coil:	S8-356 (must be ordered separately) (see data sheet RE 18325-90)	
For other details see cartridge data sheet		

Performance graph



Ordering code

OL		K	Y	Z	W	00
Solenoid operated valves standard integrated circuits solenoid operated ventable relief valve						
Hydraulic schemes (see page 1)						Manual override options (see table on page 2)
Port sizes	P - T					
= 05	G 1					
= 06	G 1-1/4					VS-30 setting (see table on page 2)

Preferred types (readily available)

Type	Material number	Type	Material number
OL2906073A0000	R934002602		
OL3006071A0000	R934002604		
OL3006071B0000	R934002605		
OL3006101A0000	R934002607		
OL3006101B0000	R934002608		

Further types available by request