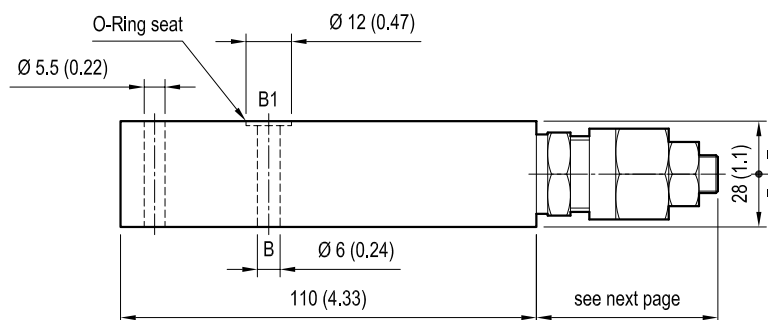
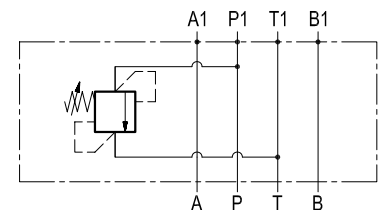
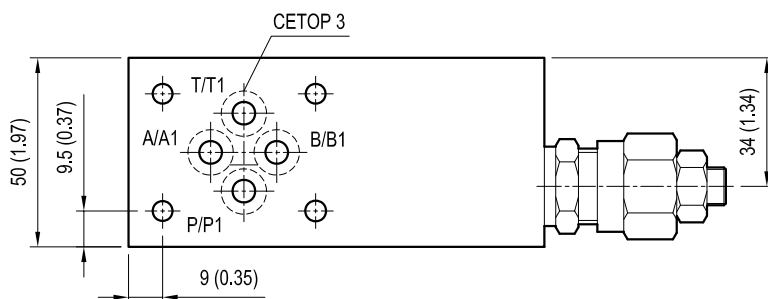


Sandwich valves, relief valve module

EM-VS30-CETOP 3

OP.01.01 - X - 29 - Z

Dimensions



[mm (inches)]

Technical data

Max flow: up to 30 l/min (8 gpm)

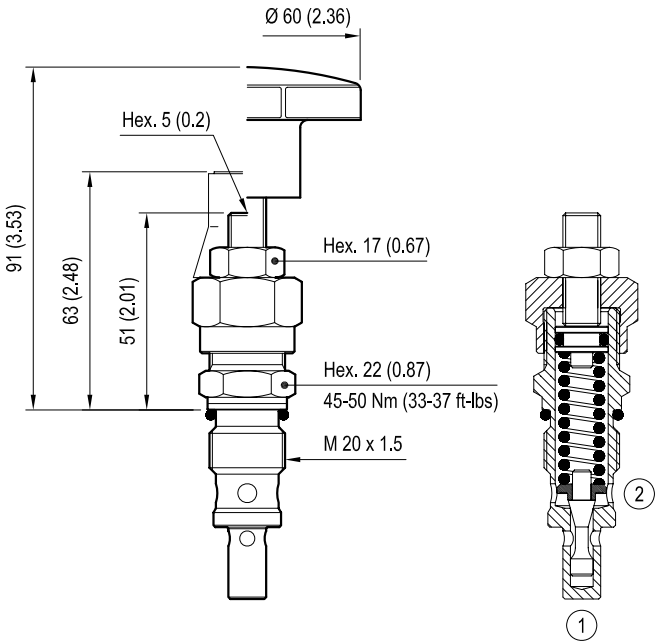
Max operating pressure: 210 bar (3000 psi)

Standard manifolds in high strength aluminium.

For working pressure up to 350 bar (5000 psi) and for fatigue applications with any working pressure, steel manifolds are available upon request.

Weight: 0.53 kg (1.17 lbs)

VS-30 code 04.11.18-X-99-Z



X	VS-30 ADJUSTMENTS	
03	Leakproof hex. socket screw	
04	Handknob and locknut	

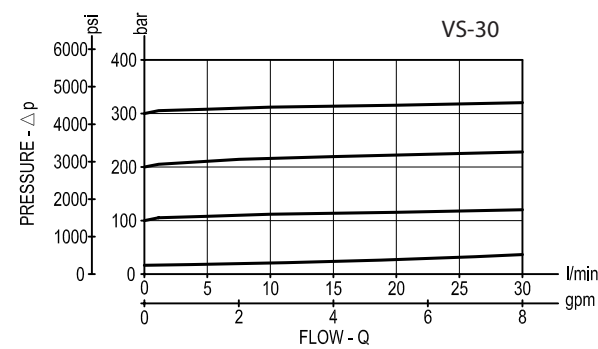
OPTIONS	
Ordering code	Description
11.04.23.003	Tamper resistant cap

For other details see data sheet RE 18318-23

[mm (inches)]

Z	SPRINGS			
	Adjust pressure range bar (psi)	Pressure increase bar (psi)	Standard setting bar (psi) Q = 5 l/min	
05	5-50 (75-725)	12 (174)	50 (725)	
10	30-100 (435-1450)	24 (348)	100 (1450)	
20	50-210 (725-3000)	47 (682)	200 (2900)	
35	100-350 (1450-5000)	82 (1189)	350 (5000)	

Performance graph



Ordering code

OP.01.01		X	29	Z
Sandwich valves relief valve module				
Cartridge adjustments (see page 2)				Springs (see table on page 2)
= 03	Leakproof hex. socket screw			
= 04	Handknob and locknut			Flange CETOP 3 (DOT3)

Preferred types (readily available)

[illegible]

Further types available by request

