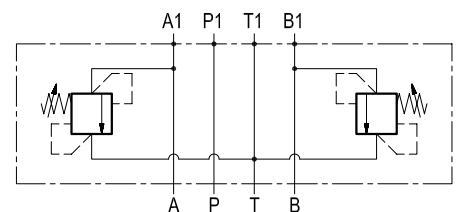
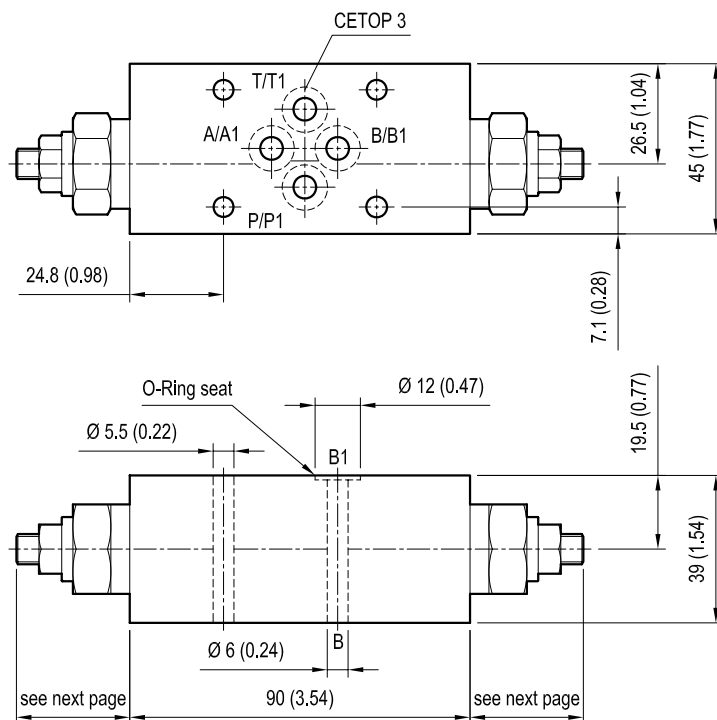


# Sandwich valves, relief valve module

EM-VSBN-08A-CETOP 3

OP.02.01 - X - 29 - Z

## Dimensions



[ mm (inches) ]

## Technical data

Max flow: up to 20 l/min (5 gpm)

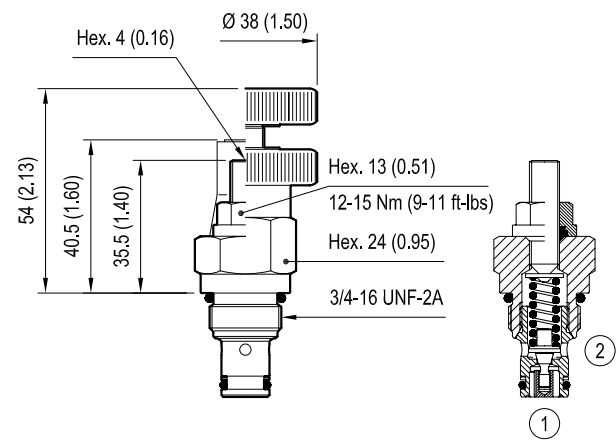
Max operating pressure: 210 bar (3000 psi)

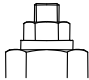
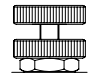
Standard manifolds in high strength aluminium.


For working pressure up to 350 bar (5000 psi) and for fatigue applications with any working pressure, steel manifolds are available upon request.

Weight: 0.53 kg (1.17 lbs)

VSBN-08A code 04.11.49-X-56-Z

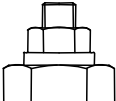
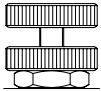


X	VSBN-08A ADJUSTMENTS	
03	Leakproof hex. socket screw	
04	Handknob and locknut	

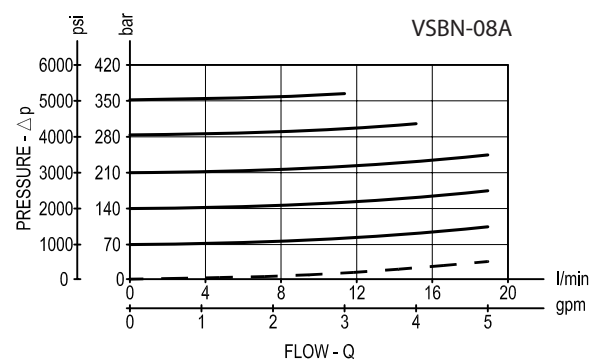
OPTIONS	
Ordering code	Description
11.04.23.002	 Tamper resistant cap

For other details see data sheet RE 18318-04

[ mm (inches) ]

Z		SPRINGS		
		Adjust pressure range bar (psi)	Pressure increase bar (psi)	Standard setting bar (psi) Q = 5 l/min
	04	10-70 (145-1000)	26 (375)	50 (725)
	10	35-140 (500-2000)	50 (725)	100 (1450)
	20	105-210 (1500-3000)	79 (1145)	200 (2900)
	35	175-350 (2500-5000)	170 (2465)	350 (5000)
	35	35-350 (500-5000)	72 (1044)	200 (2900)

Performance graph



Ordering code

OP.02.01				X	29	Z
Sandwich valves relief valve module						
Cartridge adjustments (see page 2)				Springs (see table on page 2)		
= 03      Leakproof hex. socket screw						
= 04      Handknob and locknut				Flange CETOP 3 (DOT3)		

Preferred types (readily available)

Type	Material number	Type	Material number
OP0201032910	R934002674		
OP0201032920	R934002675		
OP0201032935	R934002676		

Further types available by request

