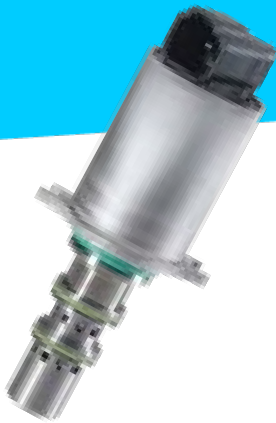


DRE05SK - self-air bleeding proportional pressure reducing valve



CUSTOMER BENEFITS

- Elimination of valve vibrations caused by air in the hydraulic circuit
- Low maintenance (self-air bleeding, robust filter concept)
- Improvement of energy efficiency through optimized valve design
- Connector can be individually aligned in application
- Improvement of precision and reproducibility through low hysteresis

FEATURES

- Self-air bleeding valve design (robust against air in the hydraulic system)
- Direct-actuated operating principle
- 3 pressure stages available (20 / 25 / 30 bar)
- New robust filter design (with etched 180 µm screen filter)
- Connector can be rotated through 360°
- Slip-in style
- Filter in P standard, optional in A
- High repeatability
- High efficiency with low leakage
- Excellent controllability
- IP 69K available
- 720 h salt spray test

THE DRE05SK (RISING CHARACTERISTIC) IS A DIRECT OPERATED 30 L/MIN LOW PRESSURE VALVE WITH UP TO 30 BAR CONTROL PRESSURE. DUE TO THE SPECIAL DESIGN PRINCIPLE, THE CONTROL BEHAVIOR OF THE VALVE IS ROBUST AGAINST AIR INCLUSIONS IN THE HYDRAULIC CIRCUIT AND CAN AUTOMATICALLY AIR BLEED ITSELF.

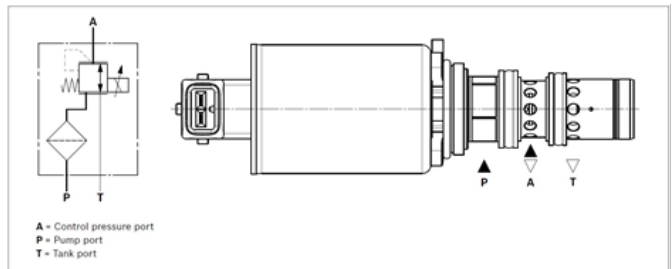
The valve controls the pressure at port A proportional to the current at the solenoid. Version S means increasing characteristic curve, i.e. increasing current causes increasing pressure.

The proportional solenoid converts the electric current into mechanical force that acts on the control spool via the anchor.

The control spool controls the connection between the main ports.

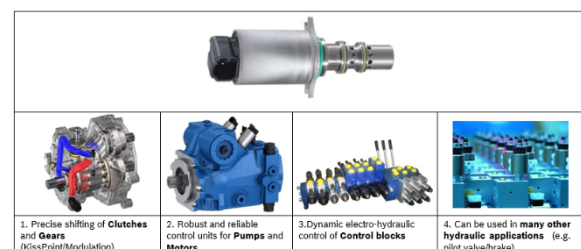
NOTICE

Occurring tank pressure (port T) adds up to the control pressure (port A).



For further information please refer to data sheet 64659.

FIELDS OF APPLICATION



Contact: compacthydraulics-cv@boschrexroth.com