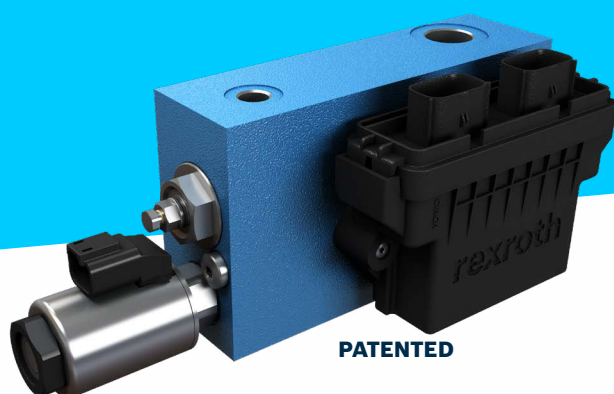


# E-motion Plus valve Electronic compensation for boom control with on-board electronics



## CUSTOMER BENEFITS

- Metering and lowering speed control optimization via software
- Electronic pressure compensation with profile adaptation
- Calibration via software tuning
- Compact and flexible solution
- Lower pressure drop: less fuel consumption
- Simplified installation - no hydraulic pilot piping
- Fine control
- Reduced hysteresis
- Reduced overshoot in relief function
- Electronic control and compensation available via pressure sensors
- Oil recovery function (optional)
- CANbus control on demand
- Sequency logics available to avoid incorrect movement
- The valve already cabled to reduce cost and time to market

## THE NEW E-MOTION PLUS VALVE

The new E-motion Plus for boom control, thanks to its electronic control and setup, offers a very fine movement controllability and adaptation to all machines. The electronic control of the valve makes it possible to achieve optimized movements control, electronic pressure compensation and simple adaptation to all machines with improved performance that have not until now been possible with standard products. The valve can be equipped with Rexroth pressure sensors located upstream and downstream the main control stage to perform the electronic control and compensation.

## TECHNICAL DATA

Max. Flow	Max. Pressure
150 l/min	350 bar

## APPLICATIONS

