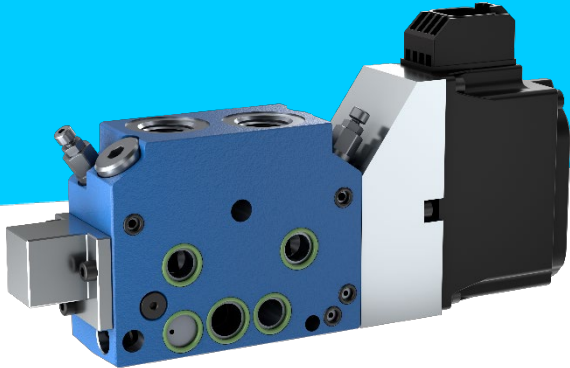


EDG-OBE Compact Directional Valve Closed-Loop with Integrated Onboard Electronics



CUSTOMER BENEFITS

- Increased machine precision and controllability
- Optimization of the machine layout and simplified cabling
- Improved system efficiency and architecture optimization
- Enhanced reliability and operational stability
- Simplified integration in multi-station control systems

TECHNICAL DATA

Inlet max Flow: 120 l/min
Max flow per slice: 60 l/min
Max working pressure: 350 bar
Control type: Closed-loop
Feedback: Integrated Hall-effect spool position sensor
Communication protocol: CAN SAE J1939 or CAN OPEN
Control algorithm: Integrated PID
Compatibility: EDG pre-compensated valve range
Auxiliary functions: Anti-shock, anti-cavitation, LS relief

APPLICATIONS

- Construction machinery
- Truck-mounted cranes
- Aerial work platforms
- Agricultural machinery
- Drilling machines
- Municipal vehicles
- Autonomous and semi-autonomous mobile machines

INNOVATIVE EDG-OBE VALVE ENHANCING PRECISION AND DIGITAL INTEGRATION IN MOBILE MACHINES

Bosch Rexroth introduces the **EDG-OBE Compact Directional Valve with Onboard Electronics**, a high-performance solution designed to unlock the benefits of digitalization in mobile working machines.

By integrating sensors, EDG-OBE significantly increases precision, responsiveness and system reliability while simplifying machine architecture.

Engineered for demanding mobile applications, the EDG-OBE ensures stable and accurate valve control load and operating conditions.

Seamless to the EDG product range this solution is MODULAR DESIGN FOR OPTIMIZED and configurable together with:

- EDG-DP direct-operated analog open-loop solutions
- EDG-PP pilot-operated analog open-loop solutions

The modular architecture enables integration of auxiliary functions such as:

- Anti-shock valves
- Anti-cavitation valves
- LS relief

This ensures maximum configurability and adaptability for specific machine requirements.

KEY FEATURES

- Closed-loop spool control with integrated Hall-effect position feedback
- Integrated onboard PID control
- CAN SAE J1939 or CAN OPEN compatibility
- Optimization of the machine layout and simplified cabling
- Plug-and-play functionality
- Real-time diagnostics and status reporting
- Fast response times and minimal hysteresis