

Flow Diverter VS570

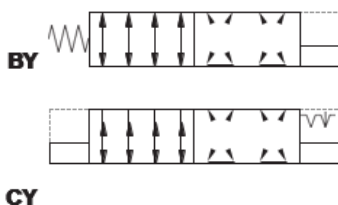
CUSTOMER BENEFITS

- Compact dimensions and light weight
- Independent max. pressure setting on each section
- Fine proportional control
- Available matching with all ED series
- Spool sensor availability for safety and/or diagnosis
- Designed to give maximum flexibility in design and building concept
- EDG available in two variants:
- Low body version for compact and light control blocks
- Medium body version which includes auxiliary valves according to customer needs

TECHNICAL DATA

- Max pressure: 210bar
- Max flow: 10 l/min Ports: G1/4 e SAE4

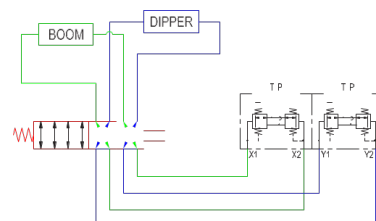
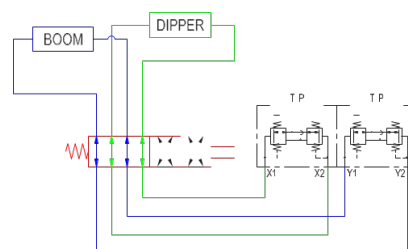
CONFIGURATIONS



8/2 WAYS/POSITIONS FLOW DIVERTERS WITH OR WITHOUT DETENT

This valve has been designed to allow the operator to select the control pattern of the joysticks which are used to control the movements of the dipper and boom functions on backhoe loaders and excavators. This valve is energized by just one coil and permits the pattern inversion from ISO to SAE (and vice versa) on the two joysticks.

For this function, when electric actuation is required, normally two different 4/2 directional valves are used with two coils (one for each). In the case one of these two valves fails, one of the joysticks risks to be inverted partially and this can put the operator and his machine in danger. With our 8/2 diverter this cannot happen as you have simultaneous inverting of both joysticks with just one coil.



Contact: compact-hydraulics-cdv@boschrexroth.com