

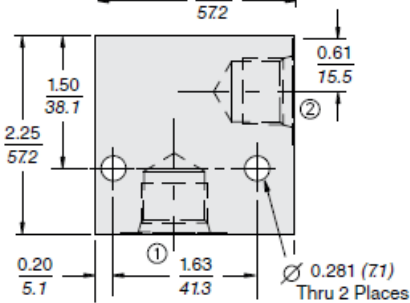
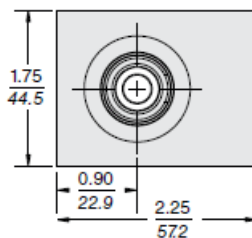


Ratings

Pressure rating	207 bar (3000 psi)	- Note:
	Aluminum	
	345 bar (5000 psi)	- Note:
	Ductile iron	
Material	6061-T6511	- Note:
	Aluminum	
	Dura-bar	- Note: Ductile iron

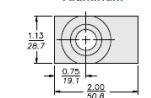
Dimensions

2-WAY H-Series  
Ductile Iron

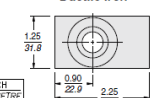


SAE 8 Ported Housing shown

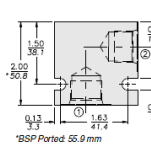
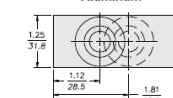
2-WAY  
Aluminum



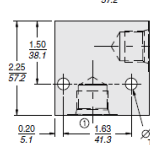
2-WAY  
Ductile Iron



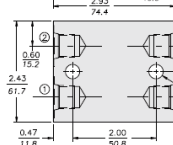
2-WAY Cross-Over  
Aluminum



SAE 8 Ported Housing shown



SAE 8 Ported Housing shown



7070160 CRV Housing



## Part Numbers

### CAVITY: VC08-2

P/N: 7024640	Code: 4T	Material: ALUMINUM			
Port 1	Port 2	Port 3	Port 4	Port 5	Port 6
SAE 4	SAE 4				
P/N: 7024660	Code: 6T	Material: ALUMINUM			
Port 1	Port 2	Port 3	Port 4	Port 5	Port 6
SAE 6	SAE 6				
P/N: 7070160	Code: 6T	Material: ALUMINUM			
Port 1	Port 2	Port 3	Port 4	Port 5	Port 6
SAE 6 (2)	SAE 6 (2)				
P/N: 7024680	Code: 8T	Material: ALUMINUM			
Port 1	Port 2	Port 3	Port 4	Port 5	Port 6
SAE 8	SAE 8				
P/N: 7151010	Code: 6TD	Material: DUCTILE IRON			
Port 1	Port 2	Port 3	Port 4	Port 5	Port 6
SAE 6	SAE 6				
P/N: 7151020	Code: 8TD	Material: DUCTILE IRON			
Port 1	Port 2	Port 3	Port 4	Port 5	Port 6
SAE 8	SAE 8				
P/N: 7028620	Code: 2B	Material: ALUMINUM			
Port 1	Port 2	Port 3	Port 4	Port 5	Port 6
1/4" BSP	1/4" BSP				
P/N: 7028630	Code: 3B	Material: ALUMINUM			
Port 1	Port 2	Port 3	Port 4	Port 5	Port 6
3/8" BSP	3/8" BSP				
P/N: 7151050	Code: 3BD	Material: DUCTILE IRON			
Port 1	Port 2	Port 3	Port 4	Port 5	Port 6
3/8" BSP	3/8" BSP				