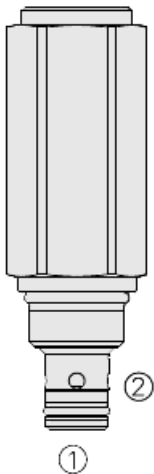




Overview



Description

The CR08-28H is a screw in, cartridge style, direct acting, differential area, poppet type, internally vented, bidirectional hydraulic relief valve intended for use as a pressure limiting device for common hydraulic circuit protection

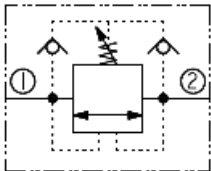
Operation

The CR08-28H blocks flow from either port 1 or port 2. On attainment of a predetermined pressure at either port 1 or port 2, the spring-opposed poppet is forced from its seat. The cartridge offers fast response to load changes in typical hydraulic circuits requiring low hysteresis, low pressure rise and low internal leakage

Features

- Factory preset hidden adjustment.
- Pressure setting range of 138-276 bar (2000-4000 psi)
- Corrosion-protection of 960 hours salt spray per ASTM B117.
- Hardened parts for long life.
- Industry common cavity.

Symbol



Ratings

Pressure Ratings

Pressure rating	276 bar (4000 psi)
Proof pressure	689.7 bar (10000 psi)
Burst pressure	827.6 bar (12000 psi)
Crack pressure defined	Pressure evident at 0.95 lpm (0.25 gpm)
Reseat pressure	Nominal 85% of crack pressure leakage to 1 ml/min (20 drops/min)

Flow Ratings

Flow rating	37.9 lpm (10 gpm)
Maximum internal leakage	1 ml/min (20 drops/min)

Temperature Ratings

Maximum operating fluid temperature	-40 to 100 °C (-40 to 212 °F)	- Note: With buna N seals
	-26 to 204 °C (-15 to 400 °F)	- Note: With fluorocarbon seals
	-54 to 107 °C (-65 to 225 °F)	- Note: With polyurethane seals
Storage temperature	-40 to 70 °C (-40 to 160 °F)	
Ambient temperature	-40 to 70 °C (-40 to 160 °F)	

Other Ratings

Corrosion protection	960 hr salt spray per ASTM b117
----------------------	---------------------------------

Operating Parameters

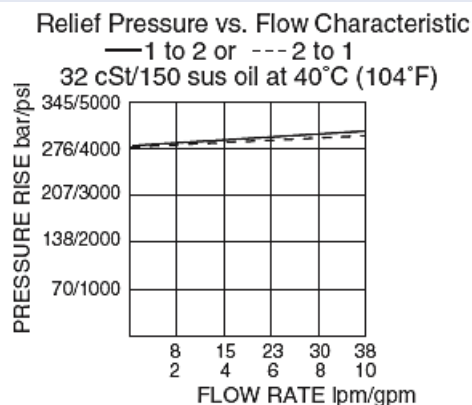
Fluids	Mineral based or synthetic with lubricating properties
Fluid viscosity range	7.4 to 420 cSt
Maximum operating contamination level	18/16/13 per ISO 4406



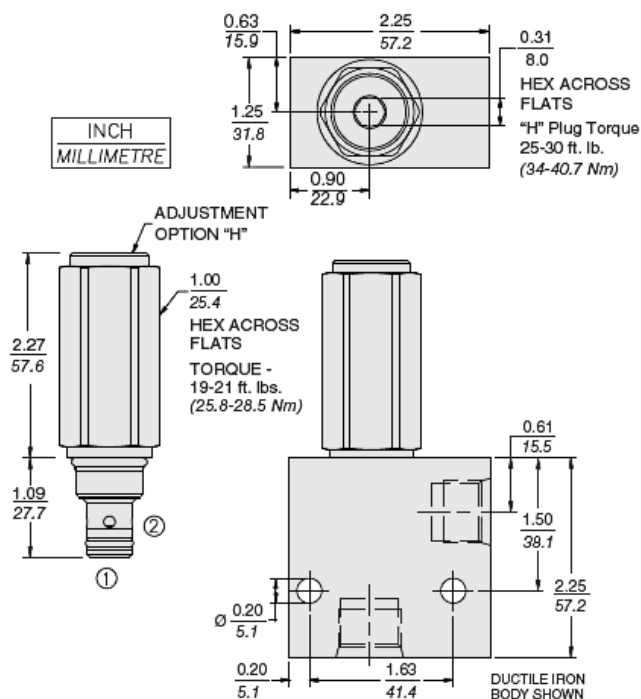
Properties

Cartridge weight	0.24 kg (0.52 lb)
Internal wetted surface area	167 cm ² (25.9 in ²)

Performance



Dimensions



Materials

Materials

Cartridge: Weight: 0.24 kg (0.52 lb). Steel with hardened work surfaces. Zinc-plated exposed surfaces.

Standard Ported Body: Weight: 0.63 kg (1.38 lb). Ductile iron, rated to 350 bar (5075 psi). Aluminum body available; weight and dimensions may differ.

Installation Specifications

Cavity	VC08-2
Cartridge installation torque	25.8 to 28.5 N-m (19 to 21 ft-lb)
H style plug torque	34 to 40.7 N-m (25 to 30 ft-lb)
Orientation restriction	None



Accessories

Seal kit	SK08-2X-M	- Note: X = seal option
Housings		