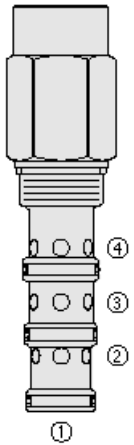




## Overview



### Description

EC42-M43 is a screw-in, cartridge style, priority on demand pressure compensator with dynamic load sense, intended to provide priority flow in required amount, while allowing excessive flow to be used for auxiliary functions.

**NOTE:** 0.79 mm (0.031 in) orifice recommended to be installed in load sense line at port 1 for better stability.

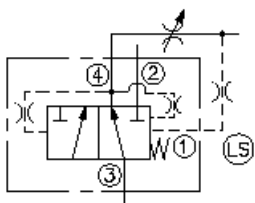
### Operation

With inlet flow at port 3, the EC42-M43 will deliver required flow at port 4 regardless of load pressure. Excessive flow exits at port 2. Port 1 is the load sense port.

### Features

- Hardened parts for long life.
- Quiet, modulated response.
- Industry-common cavity.

## Symbol



## Ratings

### Pressure Ratings

Pressure rating 241 bar (3500 psi)

### Flow Ratings

Inlet flow rating	303 lpm (80 gpm)	
Priority flow rating	246 lpm (65 gpm)	- <b>Note:</b> With 15.2 bar (220 psi)compensating spring
	208 lpm (55 gpm)	- <b>Note:</b> With 10.3 bar (150 psi)compensating spring
	151 lpm (40 gpm)	- <b>Note:</b> With 5.5 bar (80 psi)compensating spring

### Temperature Ratings

Operating fluid temperature	-40 to 100 °C (-40 to 212 °F)	- <b>Note:</b> With buna N seals
	-26 to 204 °C (-15 to 400 °F)	- <b>Note:</b> With fluorocarbon seals
	-54 to 107 °C (-65 to 225 °F)	- <b>Note:</b> With polyurethane seals
Storage temperature	-40 to 70 °C (-40 to 160 °F)	
Ambient temperature	-40 to 70 °C (-40 to 160 °F)	

### Other Ratings

Corrosion protection 960 hr salt spray per ASTM b117 (model number - gec42-m43)

## Operating Parameters

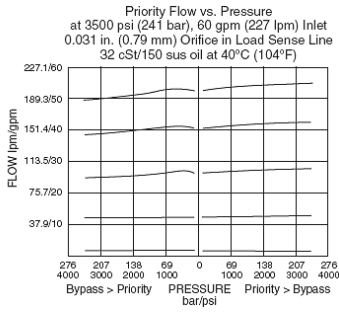
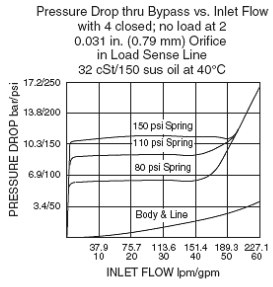
Fluids	Mineral based or synthetic hydraulic fluid with lubricating properties
Fluid viscosity range	7.4 to 420 cSt
Maximum operating contamination level	18/16/13 per ISO 4406

## Properties

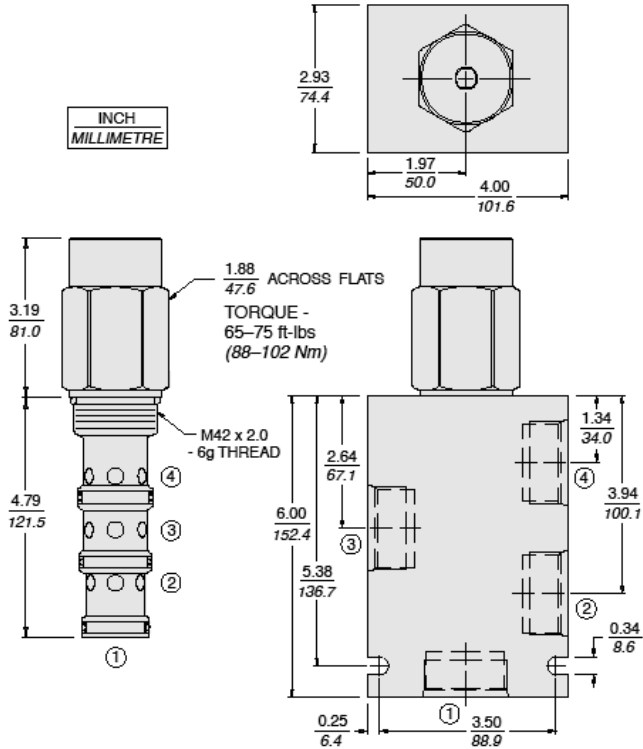
Unit weight	1.58 kg (3.48 lb)
Internal wetted surface area	781.5 cm <sup>2</sup> (121.1 in <sup>2</sup> )



## Performance



## Dimensions



## Installation Specifications

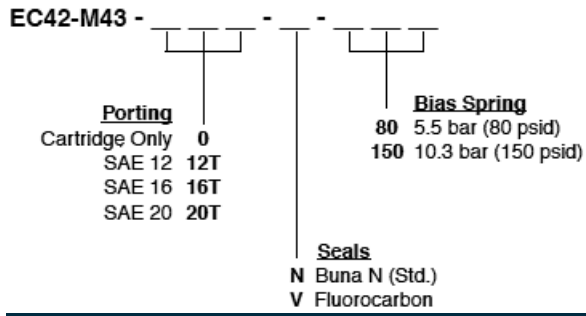
Cavity	VC42-M4
Cartridge installation torque	88 to 102 N-m (65 to 75 ft-lb)
Orientation restriction	None

## Accessories

Seal kit	SK42-4X-MMM	- Note: X = seal option
Housings		



Order Code



POSITION	CODE	DESCRIPTION
		EC42-M43-H-J-R
H		Line Body
H	0	No Body
H	16T	Aluminum SAE 16
H	20T	Aluminum SAE 20
J		Seal
J	N	Buna-N
J	V	Fluorocarbon
J	P	Polyurethane
J	U	PPDI Urethane
R		Compensator Spring
R	80	80 Compensator Spring
R	110	110 Compensator Spring
R	150	150 Compensator Spring
R	220	220 Compensator Spring