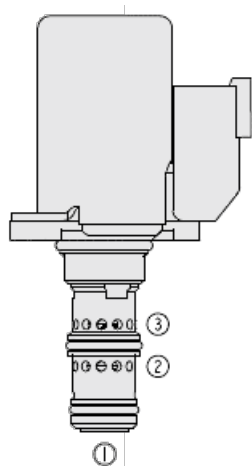




Overview



Description

The EHPR98-T38CX is a direct-acting, spool-type, proportional, pressure reducing/relieving valve. It is a drop-in, flange mounted cartridge type valve for use with mineral based or synthetic (with lubricating properties) hydraulic fluids. The coil is an integral part of the valve and is not serviceable. The regulated pressure is proportional to the input electrical current in the pressure ranges shown.

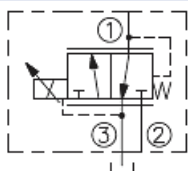
Operation

The EHPR98-T38C allows free flow from 1 to 3 when no current is applied to the coil. When the coil is energized, 2 is connected to 1. Increasing current applied to the coil will increase the control (reduced) pressure proportionally. If pressure at 1 exceeds the setting induced by the coil, pressure from 1 is relieved to 3.

Features

- Economical drop-in style.
- 960 hour salt spray protection.
- Integral waterproof coil standard.
- Optional 142 micron screen at port 2.

Symbol



Ratings

Pressure Ratings

Pressure rating	50.0 bar (725 psi)	
Burst pressure	345 bar (5000 psi)	- Note: Ports 1 and 2 pressurized

Flow Ratings

Flow rating	30.3 lpm (8 gpm)	
Maximum internal leakage	50 ml/min (3 in ³ /min)	- Note: At de-energized 34.5 bar (500 psi)
	100 ml/min (6 in ³ /min)	- Note: At energized at imax 34.5 bar (500 psi)
Hysteresis per cent	4 %	- Note: Of maximum control pressure

Other Ratings

Cycle life	5 million cycles
Environmental rating	Ip69k

Temperature Ratings

Operating fluid temperature	-40 to 149 °C (-40 to 300 °F)	- Note: With HNBR seals
	-26 to 204 °C (-15 to 400 °F)	- Note: With fluorocarbon seals
Storage temperature	-40 to 70 °C (-40 to 160 °F)	
Ambient temperature	-40 to 80 °C (-40 to 176 °F)	

Operating Parameters

Fluids	Mineral based or synthetic hydraulic fluid with lubricating properties
Fluid viscosity range	7.4 to 420 cSt
Maximum operating contamination level	20/18/14 per ISO 4406

Properties

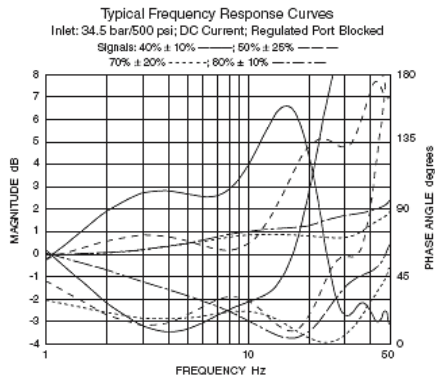
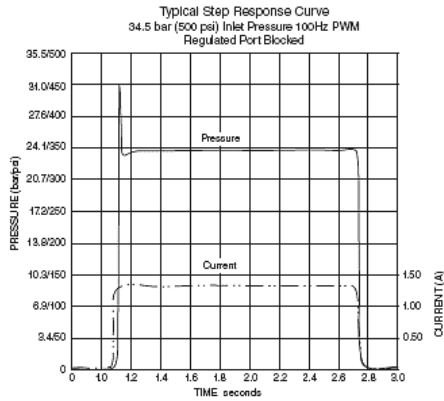
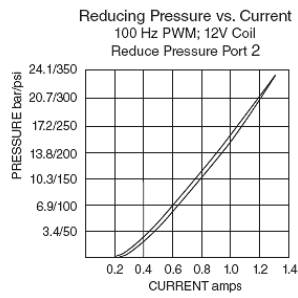
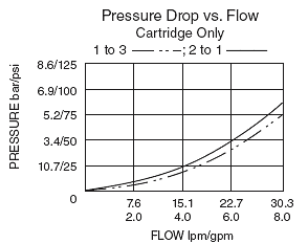
Unit weight	0.32 kg (0.70 lb)
Internal wetted surface area	179 cm ² (27.8 in ²)



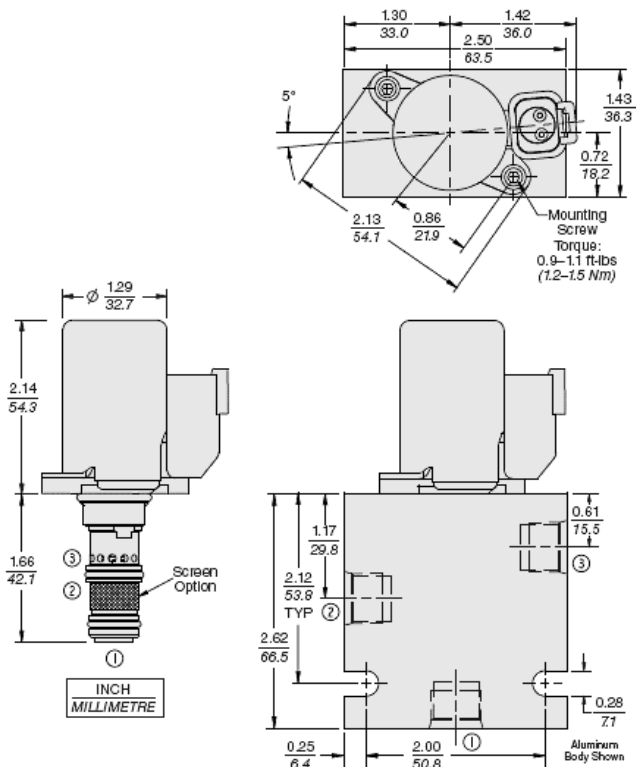
Electrical Parameters

Maximum control current	1.38 A	- Note: Coil 10 V
	1.30 A	- Note: Coil 12 V
	0.69 A	- Note: Coil 20 V
	0.65 A	- Note: Coil 24 V
Valve inductance	94 mH	- Note: Coil 12 V
	402 mH	- Note: Coil 24 V

Performance



Dimensions





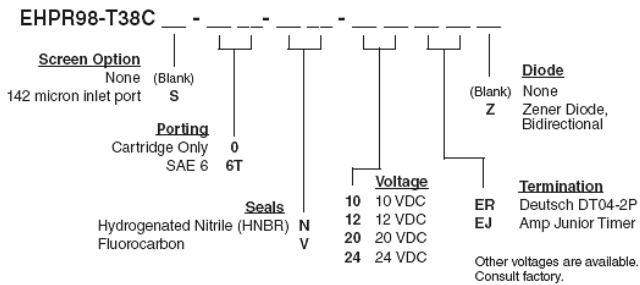
Installation Specifications

Cavity	VC-T011
Installation type	Flange mounted
Orientation restriction	None
Mounting screw torque	1.2 to 1.5 N-m (0.9 to 1.1 ft-lb)

Accessories

Mounting screw	M4 x 12, hf p/n: 4001015 (sold separately)
Valve body	Hf p/n 71570x0 (sold separately)
Seal kit	SK-T011-X - Note: X = seal option

Order Code



POSITION	CODE	DESCRIPTION
		EHPR98-T38CEG-H-J-KL
E		Manual Override
E	BLANK	NONE
E	M	Minimum Regulated Pressure Override, 3/16" Internal Hex
G		Screen
G	BLANK	NONE
G	S	100 Mesh Screen
H		Line Body
H	0	No Body
J		Seal
J	N	Buna-N
J	V	Fluorocarbon
K		Coil Voltage
K	10	10 VDC
K	12	12 VDC
K	20	20 VDC
K	24	24 VDC
L		Coil Termination
L	EJ	E-Coil, AMP Jr.
L	ER	E-Coil, Deutch