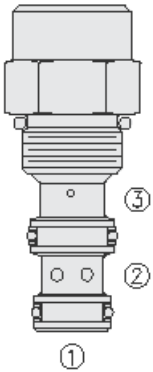




## Overview



### Description

The EP08-35 is a screw-in, cartridge style, spool type, hydraulic directional element.

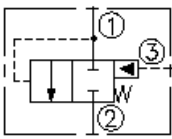
### Operation

The EP08-35 is a spring-biased blocking valve, which will open port 1 to 2 when pressure at port 1 exceeds the cumulative pressure at port 3 and the bias spring pressure value. With no pressure at port 3 flow will be allowed from port 1 to 2 once the bias spring force is overcome with pressure at port 1.

### Features

- Multiple function/application potential.
- Low pressure drop.
- Compact size.
- Industry-common cavity.

### Symbol



## Ratings

### Pressure Ratings

Pressure rating 345 bar (5000 psi)

### Flow Ratings

Flow rating See performance graph  
 Maximum internal leakage 164 ml/min (10 in<sup>3</sup>/min) - **Note:** At 207 bar (3000 psi)

### Temperature Ratings

Operating fluid temperature	-40 to 100 °C (-40 to 212 °F)	- <b>Note:</b> With buna N seals
	-26 to 204 °C (-15 to 400 °F)	- <b>Note:</b> With fluorocarbon seals
	-54 to 107 °C (-65 to 225 °F)	- <b>Note:</b> With polyurethane seals
Storage temperature	-40 to 70 °C (-40 to 160 °F)	
Ambient temperature	-40 to 90 °C (-40 to 194 °F)	

## Operating Parameters

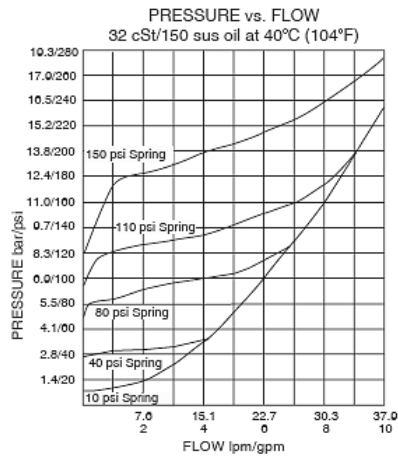
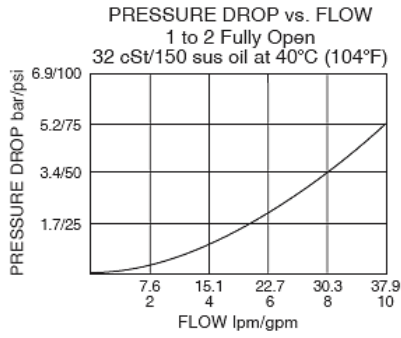
Fluids	Mineral based or synthetic hydraulic fluid with lubricating properties
Fluid viscosity range	7.4 to 420 cSt
Maximum operating contamination level	20/18/14 per ISO 4406

## Properties

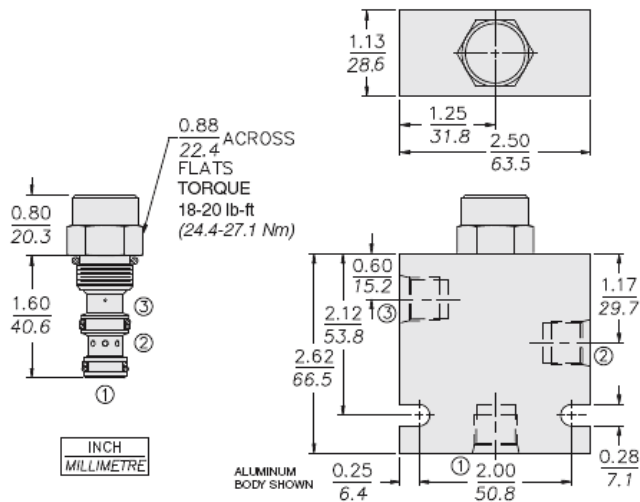
Unit weight	0.1 kg (0.22 lb)
Internal wetted surface area	101 cm <sup>2</sup> (15.6 in <sup>2</sup> )



## Performance



## Dimensions



## Installation Specifications

Cavity	VC08-3
Cartridge installation torque	25.8 to 28.5 N-m (19 to 21 ft-lb)
Maximum allowable torque	54.2 N-m (40 ft-lb)
Orientation restriction	None

## Accessories

Seal kit	SK08-3X-MM	- Note: X = seal option
----------	------------	-------------------------

## Order Code



## ORDERING INFORMATION

EP08-35X-X-X-XXX

BASE MODEL  
NUMBERCAGE OPTIONS:REGULAR - (BLANK)  
METERING - GPORTING:

CARTRIDGE ONLY - 0

SEALS:BUNA N - N  
FLUOROCARBON - V  
\* POLYURETHANE - PBIAS SPRING VALUE:10 psi [0,7 bar] - 10  
40 psi [2,8 bar] - 40  
50 psi [3,4 bar] - 50  
65 psi [4,5 bar] - 65  
80 psi [5,5 bar] - 80  
110 psi [7,6 bar] - 110  
150 psi [10,3 bar] - 150\* REQUIRED FOR PRESSURES  
OVER 3500 psi [241 bar].**Model Options****EP08-35D-H-J-R****D Cage Option**

CODE	DESCRIPTION
BLANK	Standard Cage
G	Metering (staggered holes)

**H Line Body**

CODE	DESCRIPTION
0	No Body
4T	Aluminum SAE 4
6T	Aluminum SAE 6
6TD	Ductile Iron SAE 6
8TD	Ductile Iron SAE 8
3B	Aluminum BSPP 3/8" (3)
3BD	Ductile Iron BSPP 3/8" (3)

**J Seal**

CODE	DESCRIPTION
N	Buna-N
V	Fluorocarbon
P	Polyurethane
U	PPDI Urethane

**R Spring**

CODE	DESCRIPTION
10	10 psi Bias Spring
40	40 psi Bias Spring



CODE	DESCRIPTION
80	80 psi Bias Spring
110	110 psi Bias Spring
150	150 psi Bias Spring