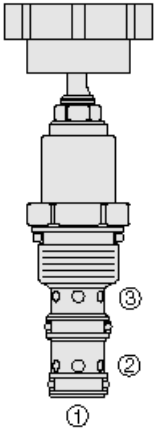




## Overview



### Description

A screw-in, cartridge style, fixed orifice, pressure compensated, bi-directional flow regulating valve (restrictive type). It is a spring biased bi-directional blocking poppet type valve

### Operation

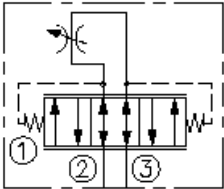
The FR10-32F maintains a constant flow rate regardless of pressure drops across the valve or flow direction from port 2 to 3 or from port 3 to 2. Port 1 should be blocked

**note:** it is intended for use with mineral based or synthetic hydraulic fluids with lubricating properties

### Features

- Hardened seat for long life and low leakage.
- Various adjustment options.
- Excellent linearity and hysteresis.
- Adjustable orifice.
- Bi-directional.
- Industry-common cavity.

### Symbol



## Ratings

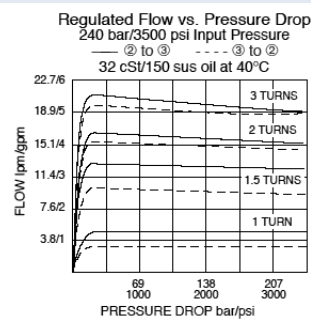
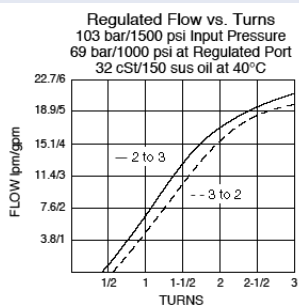
### Pressure Ratings

Pressure rating 240 bar (3500 psi)

### Flow Ratings

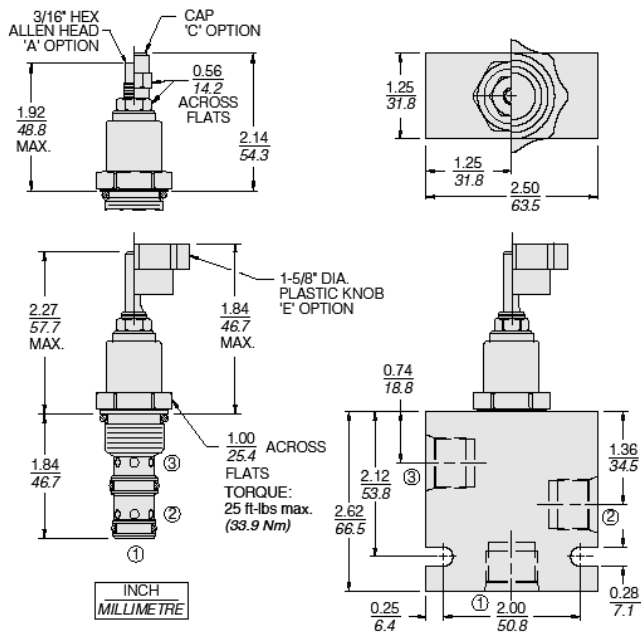
Flow setting 2.0 to 19.0 lpm (0.5 to 5.0 gpm)

## Performance





## Dimensions



## Materials

### Cartridge:

Weight: 0.30 kg (0.68 lb); Steel with hardened work surfaces. Zinc-plated exposed surfaces; Buna N O-rings and polyester elastomer back-ups standard.

### Standard Ported Body:

Weight: 0.36 kg (0.80 lb); Anodized high-strength 6061 T6 aluminum alloy, rated to 207 bar (3000 psi); Ductile iron bodies available; dimensions may differ.

## Installation Specifications

Cavity	VC10-3
Cartridge installation torque	240 N-m (25 ft-lb)



## Order Code

POSITION	CODE	DESCRIPTION
		FR10-32F-H-J/T
F		Adjustment Option
F	F	Factory Preset Non-Adjustable
H		Line Body
H	0	No Body
H	6T	Aluminum SAE 6
H	8T	Aluminum SAE 8
H	6TD	Ductile Iron SAE 6
H	8TD	Ductile Iron SAE 8
H	3B	Aluminum BSPP 3/8" (3)
H	3BD	Ductile Iron BSPP 3/8" (3)
J		Seal
J	N	Buna-N
J	V	Fluorocarbon
J	P	Polyurethane
J	U	PPDI Urethane
T		Flow setting
T	XX	Flow setting

