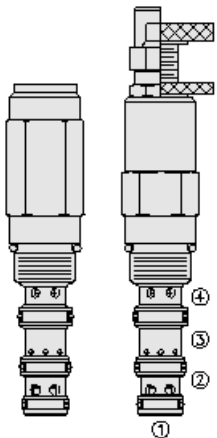




Overview



**Description**

The FRRV10-41F is a screw-in, cartridge type, combination valve includes a pressure compensated, non adjustable priority type flow regulator and a pressure relief valve. The valve is intended for use with mineral based or synthetic hydraulic fluids with lubricating properties

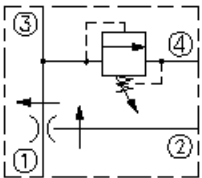
**Operation**

It maintains a constant flow rate from port 3 regardless of load pressure changes at priority port 3, or bypass port 2

**Features**

- o Two valve functions in one, industry-common cavity.
- o Adjustments cannot be backed out of the valve.
- o Relief valve adjustments prohibit relief valve spring from going solid.
- o Quiet, modulated response.
- o Hardened parts for long life.

Symbol



Ratings

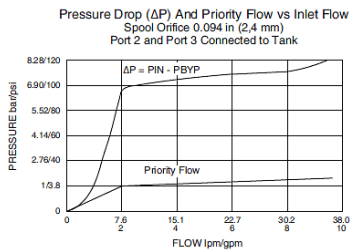
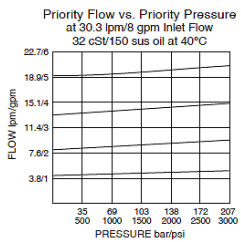
**Pressure Ratings**

Pressure rating 207 bar (3000 psi)  
276 bar (4000 psi) - **Note:** Maximum system pressure

**Flow Ratings**

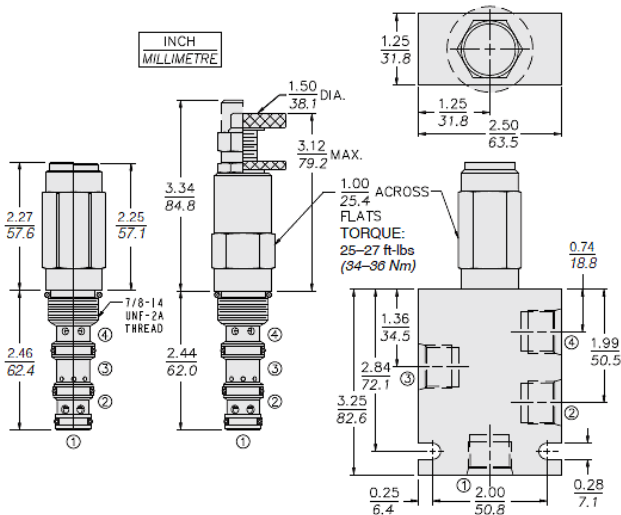
Priority flow rating 19.0 lpm (5.0 gpm) - **Note:** Maximum  
Inlet flow rating 38.0 lpm (10.0 gpm) - **Note:** Maximum

Performance





## Dimensions



## Materials

### Materials

**Cartridge:** Weight: 0.34 kg. (0.70 lbs.); Steel with hardened work surfaces. Zinc-plated exposed surfaces; Buna N O-rings and polyester elastomer back-ups standard. Anodized aluminum knobs and caps.

**Standard Ported Body:** Weight: 0.36 kg. (0.80 lbs.); Anodized high-strength 6061 T6 aluminum alloy, rated to 207 bar (3000 psi); Ductile iron bodies available; dimensions may differ. For Pressure Adjustment option details,

## Installation Specifications

Cavity

VC10-4

## Order Code

