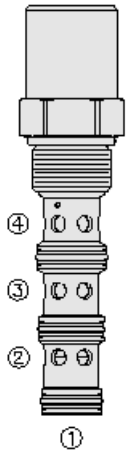




## Overview



### Description

HEC12-43 is a screw-in, cartridge style, priority on demand pressure compensator valve with dynamic load sense, intended to provide priority flow in required amount, while allowing excessive flow to be used for auxiliary functions.

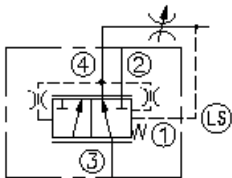
### Operation

With inlet flow at port 3, the HEC12-43 will deliver required priority flow at port 4 regardless of load pressure. Excess flow exits at port 2 and port 1 is the load sense port. All ports may be fully pressurized.

### Features

- Priority-on-demand
- Dynamic load sense
- Hardened parts for long life
- Quiet, modulated response
- 80 and 160 compensating springs
- All HyPerformance products are tested to NFPA specification T2.6.1 and are tested at a verification level of 90% and an assurance of 99%

### Symbol



## Ratings

### Pressure Ratings

Pressure rating	350 bar (5075 psi) 420 bar (6090 psi)	- <b>Note:</b> (10% cycle life)
Proof pressure	690 bar (10000 psi)	
Burst pressure	1380 bar (20000 psi)	

### Flow Ratings

Inlet flow rating	68 lpm (18.0 gpm)	- <b>Note:</b> With 5.5 bar (80 psi) compensating spring
	83 lpm (22.0 gpm)	- <b>Note:</b> With 7.6 bar (110 psi) compensating spring
	95 lpm (25.0 gpm)	- <b>Note:</b> With 11.0 bar (160 psi) compensating spring
	132 lpm (35.0 gpm)	- <b>Note:</b> With 15.2 bar (220 psi) compensating spring
Priority flow rating	Up to 80% of input flow	

### Temperature Ratings

Operating fluid temperature	-40 to 100 °C (-40 to 212 °F)	- <b>Note:</b> With buna N seals
	-26 to 204 °C (-15 to 400 °F)	- <b>Note:</b> With fluorocarbon seals
	-54 to 107 °C (-65 to 225 °F)	- <b>Note:</b> With urethane seals
Storage temperature	-40 to 70 °C (-40 to 160 °F)	
Ambient temperature	-40 to 70 °C (-40 to 160 °F)	

## Operating Parameters

Fluids	Mineral based or synthetic hydraulic fluid with lubricating properties
Fluid viscosity range	7.4 to 420 cSt
Maximum operating contamination level	18/16/13 per ISO 4406

## Properties

Unit weight	0.44 kg (0.98 lb)
Internal wetted surface area	334 cm <sup>2</sup> (51.7 in <sup>2</sup> )



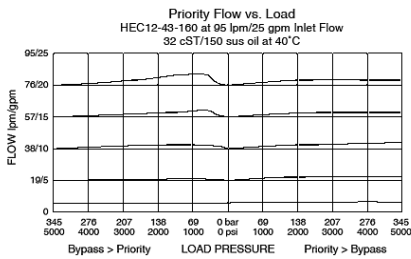
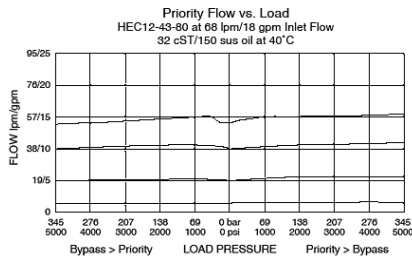
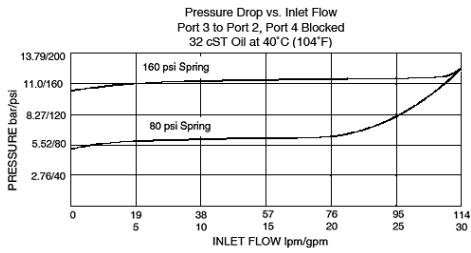
## Installation Specifications

Cavity	HVC12-4	
Cartridge installation torque	156 to 170 N-m (115 to 125 ft-lb)	- <b>Note:</b> Steel/ductile iron cavity
	122 to 136 N-m (90 to 100 ft-lb)	- <b>Note:</b> Aluminum cavity
Orientation restriction	None	

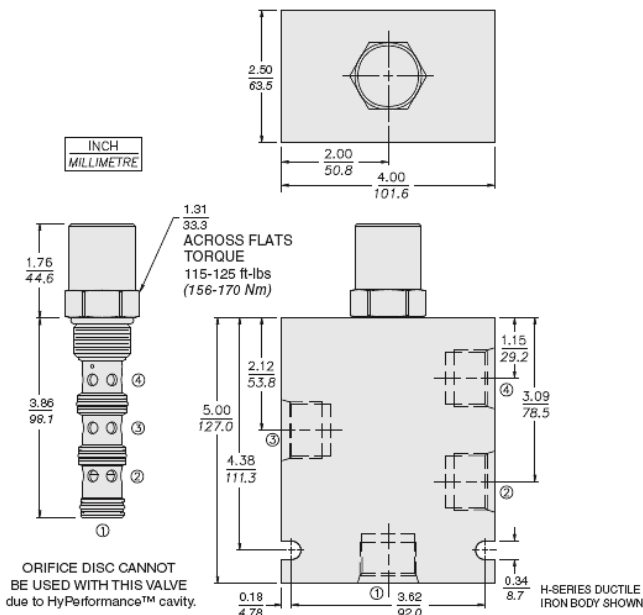
## Accessories

Seal kit	HSK12-4N-MMM	- <b>Note:</b> Buna N
	HSK12-4V-MMM	- <b>Note:</b> Fluorocarbon
	HSK12-4U-OOO	- <b>Note:</b> Urethane
Housings		

## Performance

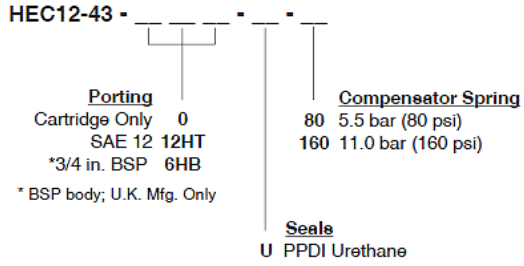


## Dimensions





Order Code



NOTE: Urethane seals recommended for operating pressures above 241 bar (3500 psi).

NOTE: Consult factory for additional seal options.

POSITION	CODE	DESCRIPTION
		HEC12-43-H-J-R
H		Line Body
H	0	No Body
H	12HT	Ductile Iron SAE 12
J		Seal
J	N	Buna-N
J	V	Fluorocarbon
J	U	PPDI Urethane
R		Compensator Spring
R	80	80 Compensator Spring
R	160	160 Compensator Spring