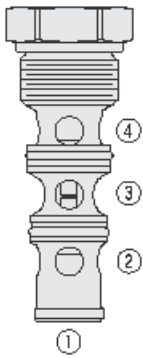




Overview



Description

The LS10-41 is a screw in, cartridge style, spring centered, inverted shuttle valve for use with general purpose hydraulic oil.

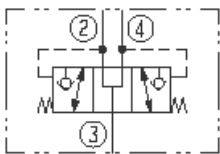
Operation

Port 1 should be blocked. The valve CAN be used in steering/brake circuit to charge 2 accumulators of 2 brakes or for other suitable application.

Features

- Hardened work surfaces.
- Industry-common cavity.

Symbol



Ratings

Pressure Ratings

Pressure rating 241 bar (3500 psi)

Flow Ratings

Flow rating See graph
 Maximum internal leakage 0.15 ml/min (3 drops/min) - **Note:** At 207 bar (3000 psi)

Temperature Ratings

Operating fluid temperature	-40 to 100 °C (-40 to 212 °F)	- Note: With buna N seals
	-26 to 204 °C (-15 to 400 °F)	- Note: With viton seals
	-54 to 107 °C (-65 to 225 °F)	- Note: With polyurethane seals
Storage temperature	-40 to 70 °C (-40 to 160 °F)	
Ambient temperature	-40 to 70 °C (-40 to 160 °F)	

Operating Parameters

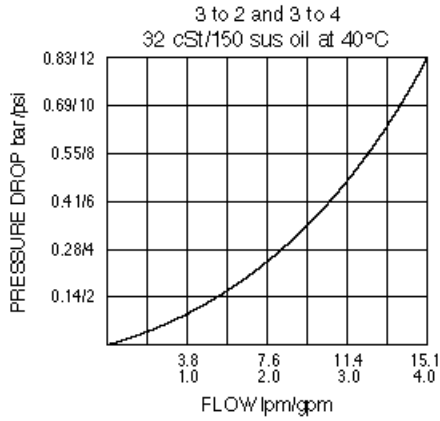
Fluids	Mineral based or synthetic hydraulic fluid with lubricating properties
Fluid viscosity range	7.4 to 420 cSt
Maximum operating contamination level	20/18/14 per ISO 4406

Properties

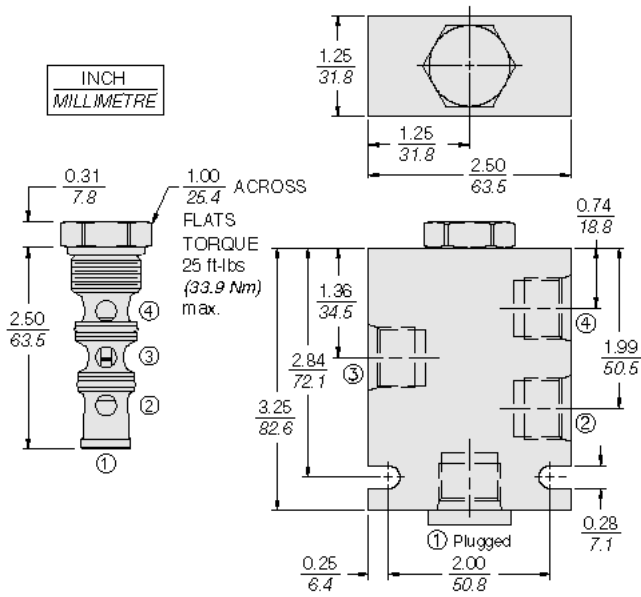
Unit weight	0.13 kg (0.23 lb)
Internal wetted surface area	121 cm ² (18.7 in ²)



Performance



Dimensions



Installation Specifications

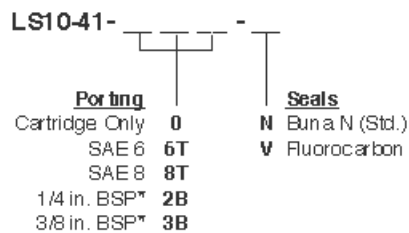
Cavity	VC10-4
Cartridge installation torque	32.6 to 35.4 N-m (24 to 26 ft-lb)
Orientation restriction	None

Accessories

Seal kit	SK10-4N-TBX	- Note: Buna N
	SK10-4V-TBX	- Note: Viton
	SK10-4P-TBX	- Note: Polyurethane
Housings		



Order Code



*BSP Body;
U.K. Mfr. Only

POSITION	CODE	DESCRIPTION
		LS10-41-H-J
H		Line Body
H	0	No Body
H	6T	Aluminum SAE 6
H	8T	Aluminum SAE 8
H	6TD	Ductile Iron SAE 6
J		Seal
J	N	Buna-N
J	V	Fluorocarbon
J	P	Polyurethane
J	U	PPDI Urethane