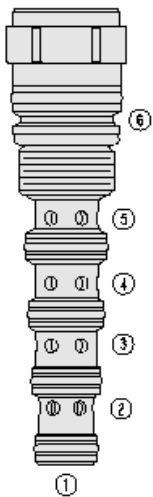




## Overview



### Description

The PD10-S62 is a screw-in, cartridge style, pilot operated, spool-type, normally closed, hydraulic directional valve.

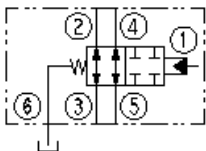
### Operation

In the neutral position flow is allowed between ports 2 and 3 and between ports 4 and 5 bidirectionally. On remote pilot signal at port 1 the valve's spool shifts to block flow at all ports, the spring chamber is vented to the tank through port 6. The vented spring chamber allows the valve to be fully pressurized at ports 1, 2, 3, 4, and 5 without affecting required pilot pressure. Pressure at port 6 will affect required pilot pressure.

### Features

- Hardened spool and cage for long life.
- Optional sealed spool between ports 1 and 2.

### Symbol



## Ratings

### Pressure Ratings

Pressure rating 250 bar (3625 psi)

### Flow Ratings

Flow rating 53 lpm (14 gpm) - **Note:** In any combination of flows between ports 2 and 3 and ports 4 and 5. (e.g. 2 + 12 gpm, 7 + 7 gpm, 10 + 4 gpm, etc.)

Maximum internal leakage 131 ml/min (8 in<sup>3</sup>/min) - **Note:** At 250 bar (3625 psi)

### Temperature Ratings

Operating fluid temperature -40 to 100 °C (-40 to 212 °F) - **Note:** With buna N seals  
 -26 to 204 °C (-15 to 400 °F) - **Note:** With fluorocarbon seals  
 -54 to 107 °C (-65 to 225 °F) - **Note:** With polyurethane and urethane seals

Storage temperature -40 to 70 °C (-40 to 160 °F)

Ambient temperature -40 to 70 °C (-40 to 160 °F)

## Operating Parameters

Fluids Mineral based or synthetic hydraulic fluid with lubricating properties

Fluid viscosity range 7.4 to 420 cSt

Maximum operating contamination level 20/18/14 per ISO 4406

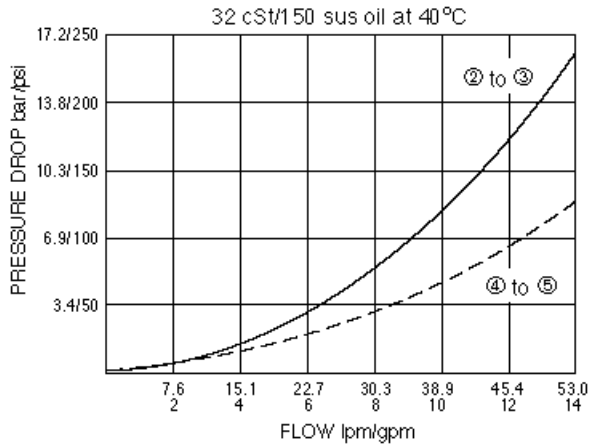
## Properties

Unit weight 0.20 kg (0.43 lb)

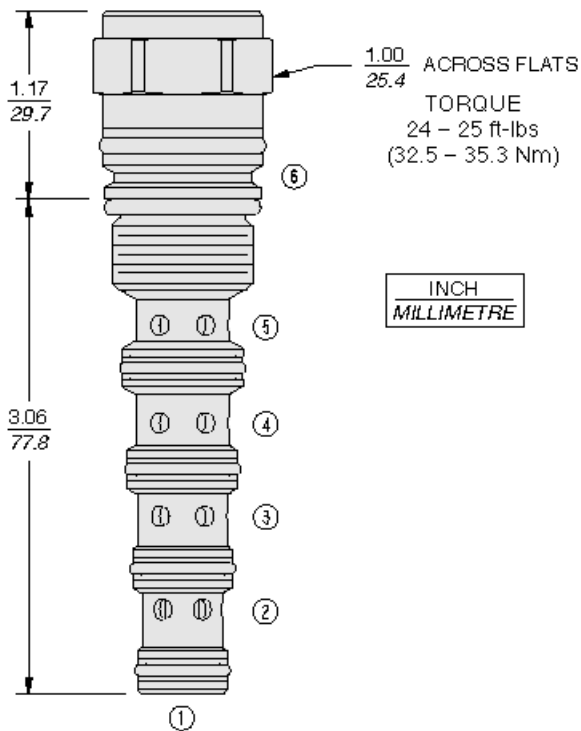
Internal wetted surface area 229 cm<sup>2</sup> (35.5 in<sup>2</sup>)



## Performance



## Dimensions



## Installation Specifications

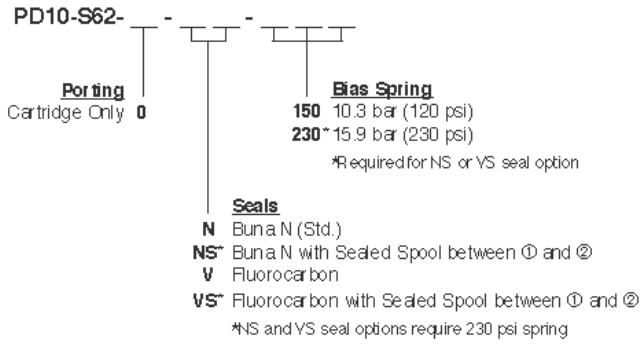
Cavity	VC10-S6
Cartridge installation torque	32.5 to 35.3 N-m (24 to 26 ft-lb)
Maximum allowable torque	67.8 N-m (50 ft-lb)
Orientation restriction	None

## Accessories

Seal kit	SK10-S6N-BMMMM	- <b>Note:</b> Buna
	SK10-S6V-BMMMM	- <b>Note:</b> Fluorocarbon
	SK10-S6P-BMMMM	- <b>Note:</b> Polyurethane
	SK10-S6U-OOOOO	- <b>Note:</b> Urethane



Order Code



Model Options

PD10-S62-H-J-R

H Line Body

CODE	DESCRIPTION
0	No Body

J Seal

CODE	DESCRIPTION
N	Buna-N
NS	Buna-N with a Sealed Spool
V	Fluorocarbon
VS	Fluorocarbon with a Sealed Spool
P	Polyurethane
PS	Polyurethane with a Sealed Spool
U	PPDI Urethane
US	PPDI Urethane with a Sealed Spool

R Spring

CODE	DESCRIPTION
150	150 psi Bias Spring
230	230 psi Bias Spring