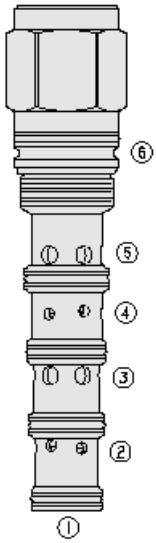




Overview



Description

The PD42-S67B is a screw-in, cartridge style, pilot operated, spool-type hydraulic directional valve.

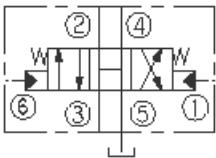
Operation

In the neutral position flow is allowed between ports 2, 3, 4 and 5. On remote pilot signal at port 1 the valve's spool shifts to allow flow between ports 3 and 4, and between ports 2 and 5. On remote signal at port 6 the valve's spool shifts to allow flow between ports 3 and 2, and between ports 4 and 5.

Features

- Hardened spool and cage for long life.

Symbol



Ratings

Pressure Ratings

Pressure rating 324 bar (4700 psi) - **Note:** At ports 2, 3, and 4
 28 bar (400 psi) - **Note:** At ports 1 and 6

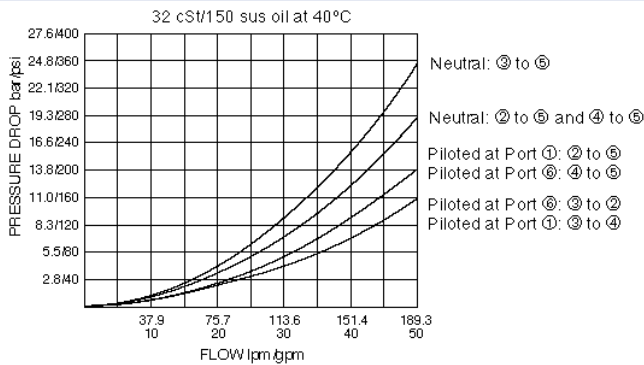
Flow Ratings

Maximum internal leakage 2 l/min (120 in³/min) - **Note:** At 207 bar (3000 psi)

Properties

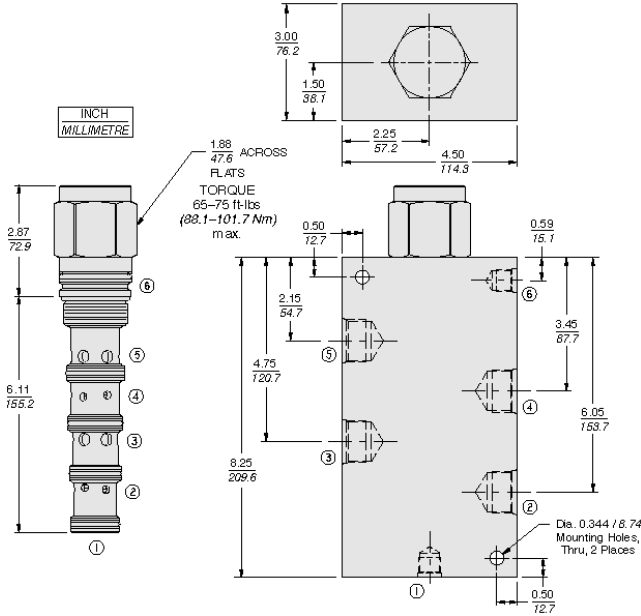
Materials steel with work surfaces hardened, external surfaces are zinc plated buna N o-rings are standard
 Unit weight 1.6 kg (3.5 lb)

Performance





Dimensions



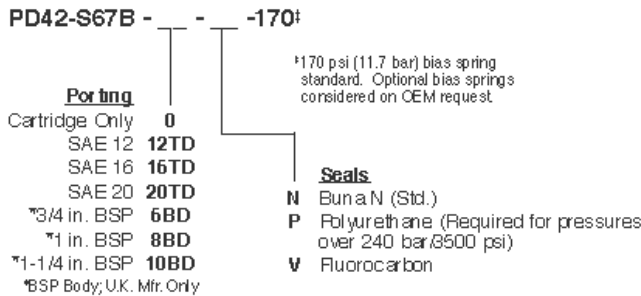
Installation Specifications

Cavity	VC42-S6
Cartridge installation torque	88.1 to 101.7 N-m (65 to 75 ft-lb)

Accessories

Seal kit	SK42-S6N-BMMMM SK42-S6V-BMMMM SK42-S6P-BMMMM	- Note: Buna N - Note: Viton - Note: Polyurethane
Housings		

Order Code



POSITION	CODE	DESCRIPTION
		PD42-S67B-H-J-R
H		Line Body
H	0	No Body
H	20TD	Ductile Iron SAE 20
J		Seal
J	N	Buna-N
J	V	Fluorocarbon
J	P	Polyurethane
J	U	PPDI Urethane
R		Spring
R	170	170 psi Bias Spring