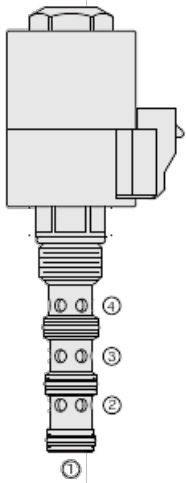




## Overview



### Description

A solenoid operated, 2 position, 4 way, direct-acting spool type, screw-in hydraulic cartridge valve

### Operation

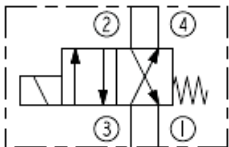
When de-energized, the SV12-40R allows flow from port 2 to port 1 and from port 3 to port 4. When energized, the spool shifts to allow flow from port 3 to port 2, and from port 4 to port 1

**note:** consult factory for applications where port 1 will be used as an inlet

### Features

- Continuous-duty rated coil. Hardened precision spool and cage for long life. Optional coil voltages and terminations. Manual override option. All ports may be fully pressurized. Heavy-duty waterproof Eâ€Coils rated up to IP69K.

## Symbol



## Ratings

### Pressure Ratings

Pressure rating	241 bar (3500 psi)
Proof pressure	345 bar (5000 psi)
Burst pressure	758 bar (11000 psi)

### Flow Ratings

Maximum internal leakage	410 ml/min (25 in <sup>3</sup> /min)	<b>- Note:</b> Max at 240 bar (3500 psi)
--------------------------	--------------------------------------	--

### Temperature Ratings

Operating fluid temperature	-40 to 100 °C (-40 to 212 °F)	<b>- Note:</b> With buna N seals
	-26 to 204 °C (-15 to 400 °F)	<b>- Note:</b> With viton seals
	-54 to 107 °C (-65 to 225 °F)	<b>- Note:</b> With polyurethane seals
Storage temperature	-40 to 70 °C (-40 to 160 °F)	
Ambient temperature	-40 to 70 °C (-40 to 160 °F)	

### Other Ratings

Environmental rating	Ip67 (with integral connectors)
----------------------	---------------------------------

## Operating Parameters

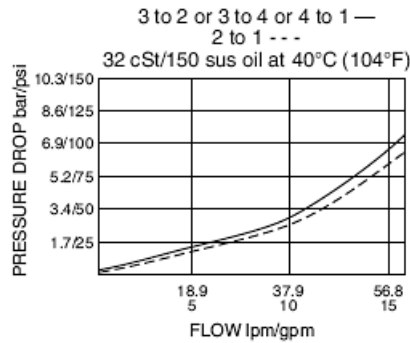
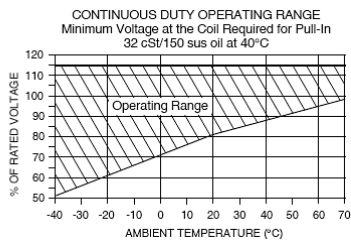
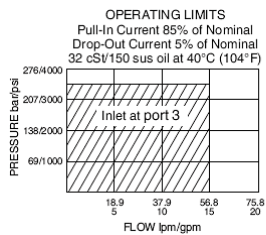
Fluids	Mineral based or synthetic hydraulic fluid with lubricating properties
Fluid viscosity range	7.4 to 420 cSt
Maximum operating contamination level	20/18/14 per ISO 4406

## Properties

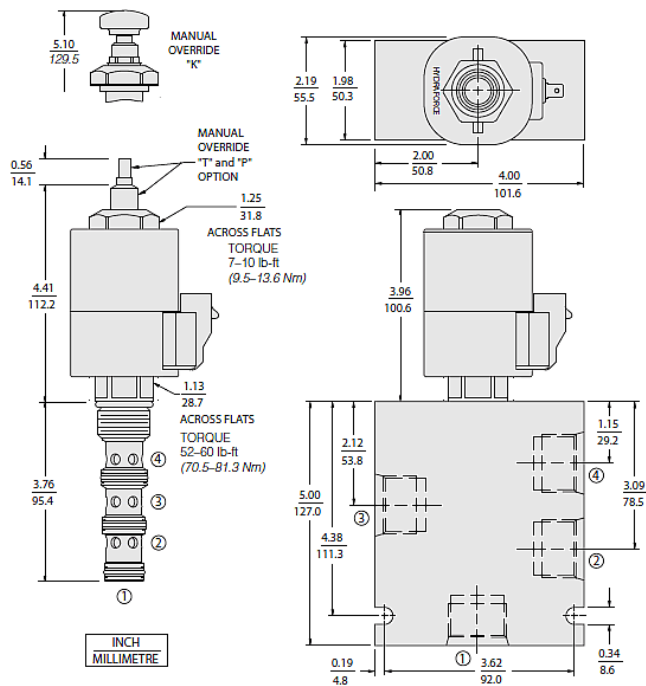
Unit weight	0.43 kg (0.95 lb)
Internal wetted surface area	333 cm <sup>2</sup> (51.6 in <sup>2</sup> )



## Performance



## Dimensions



## Materials

### Materials

**Cartridge:** Weight: 0.42 kg (0.94 lb); Steel with hardened work surfaces. Zinc-plated exposed surfaces; Buna N O-rings and TFE backups standard.

**Standard Ported Body:** Weight: 1.5 kg (3.3 lb); Anodized high-strength 6061 T6 aluminum alloy, rated to 207 bar (3000 psi); Ductile iron bodies available; dimensions may differ.

**Coil:** Weight: 1.36 kg (3.0 lb); Perfect wound, fully encapsulated with rugged external metal shell; Rated up to IP69K with integral connectors.

## Installation Specifications

Cavity	VC12-4
Cartridge installation torque	70.5 to 81.3 N-m (52 to 60 ft-lb)
Coil nut torque	6.8 to 9.5 N-m (5 to 7 ft-lb)
Orientation restriction	None

## Accessories

Seal kit	SK12-4X-MMM	- Note: X=seal option
Housings		
Coils		



Order Code

POSITION	CODE	DESCRIPTION
		SV12-40RE-H-J-L
E		Manual Override
E	BLANK	NONE
E	K	Momentary Push Override, Knob
E	P	Momentary Push Override, Button
E	T	Variable Position Override, Slotted Screw
H		Line Body
H	0	No Body
H	10T	Aluminum SAE 10
H	12T	Aluminum SAE 12
H	12TD	Ductile Iron SAE 12
H	6B	Aluminum BSPP 3/4" (6)
J		Seal
J	N	Buna-N
J	V	Fluorocarbon
J	P	Polyurethane
J	U	PPDI Urethane
L		Coil
L	0	No Coil
L	12EG	12 VDC, E-Coil, DIN 43650
L	12EL	12 VDC, E-Coil, Dual Lead Wires
L	12EL/W	12 VDC, E-Coil, Dual Lead Wires with WeatherPak
L	12ER	12 VDC, E-Coil, Deutsch
L	12ER/Z	12 VDC, E-Coil, Deutsch with Zener Diode
L	12ES	12 VDC, E-Coil, Dual Spade
L	12EY	12 VDC, E-Coil, Metri-Pack 150
L	24EG	24 VDC, E-Coil, DIN 43650
L	24ER	24 VDC, E-Coil, Deutsch
L	24ER/Z	24 VDC, E-Coil, Deutsch with Zener Diode
L	24ES	24 VDC, E-Coil, Dual Spade

