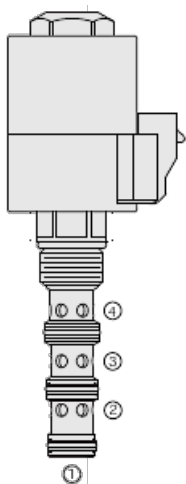




Overview



Description

A solenoid operated, 2 position, 4 way, direct-acting spool type, screw-in hydraulic cartridge valve.

Operation

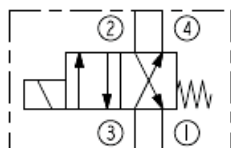
When de-energized, the SV12-40R allows flow from port 2 to port 1 and from port 3 to port 4. When energized, the spool shifts to allow flow from port 3 to port 2, and from port 4 to port 1.

note: consult factory for applications where port 1 will be used as an inlet.

Features

- Continuous-duty rated coil. Hardened precision spool and cage for long life. Optional coil voltages and terminations. Manual override option. All ports may be fully pressurized. Heavy-duty waterproof Eâ€Coils rated up to IP69K.

Symbol



Ratings

Pressure Ratings

Pressure rating	241 bar (3500 psi)
Proof pressure	345 bar (5000 psi)
Burst pressure	758 bar (11000 psi)

Flow Ratings

Maximum internal leakage	410 ml/min (25 in ³ /min)	- Note: Max at 240 bar (3500 psi)
--------------------------	--------------------------------------	--

Temperature Ratings

Operating fluid temperature	-40 to 100 °C (-40 to 212 °F)	- Note: With buna N seals
	-26 to 204 °C (-15 to 400 °F)	- Note: With viton seals
	-54 to 107 °C (-65 to 225 °F)	- Note: With polyurethane seals
Storage temperature	-40 to 70 °C (-40 to 160 °F)	
Ambient temperature	-40 to 70 °C (-40 to 160 °F)	

Other Ratings

Environmental rating	Ip67 (with integral connectors)
----------------------	---------------------------------

Operating Parameters

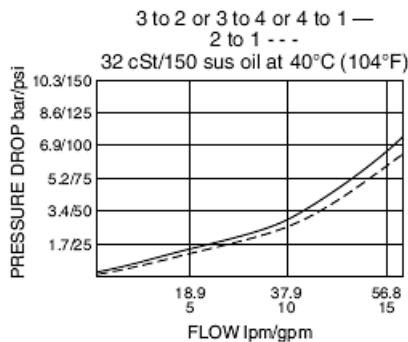
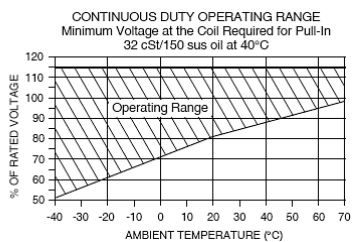
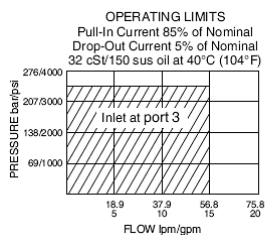
Fluids	Mineral based or synthetic hydraulic fluid with lubricating properties
Fluid viscosity range	7.4 to 420 cSt
Maximum operating contamination level	20/18/14 per ISO 4406

Properties

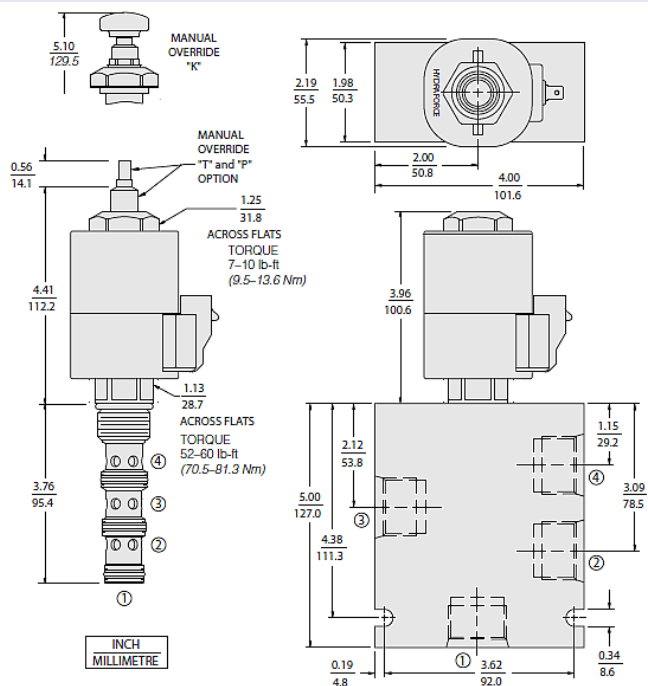
Unit weight	0.43 kg (0.95 lb)
Internal wetted surface area	333 cm ² (51.6 in ²)



Performance



Dimensions



Installation Specifications

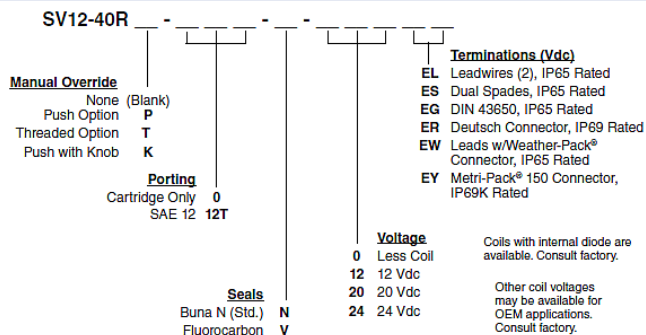
Cavity	VC12-4
Cartridge installation torque	70.5 to 81.3 N-m (52 to 60 ft-lb)
Coil nut torque	6.8 to 9.5 N-m (5 to 7 ft-lb)
Orientation restriction	None

Accessories

Seal kit	SK12-4X-MMM	- Note: X=seal option
Housings		
Coils		



Order Code



POSITION	CODE	DESCRIPTION
		SV12-40RE-H-J-L
E		Manual Override
E	BLANK	NONE
E	K	Momentary Push Override, Knob
E	P	Momentary Push Override, Button
E	T	Variable Position Override, Slotted Screw
H		Line Body
H	0	No Body
H	10T	Aluminum SAE 10
H	12T	Aluminum SAE 12
H	12TD	Ductile Iron SAE 12
H	6B	Aluminum BSPP 3/4" (6)
J		Seal
J	N	Buna-N
J	V	Fluorocarbon
J	P	Polyurethane
J	U	PPDI Urethane
L		Coil
L	0	No Coil
L	12EG	12 VDC, E-Coil, DIN 43650
L	12EL	12 VDC, E-Coil, Dual Lead Wires
L	12EL/W	12 VDC, E-Coil, Dual Lead Wires with WeatherPak
L	12ER	12 VDC, E-Coil, Deutsch
L	12ER/Z	12 VDC, E-Coil, Deutsch with Zener Diode
L	12ES	12 VDC, E-Coil, Dual Spade
L	12EY	12 VDC, E-Coil, Metri-Pack 150
L	24EG	24 VDC, E-Coil, DIN 43650
L	24ER	24 VDC, E-Coil, Deutsch
L	24ER/Z	24 VDC, E-Coil, Deutsch with Zener Diode
L	24ES	24 VDC, E-Coil, Dual Spade