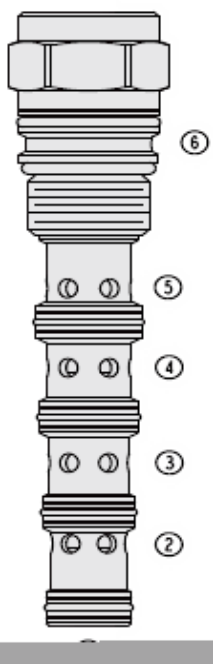
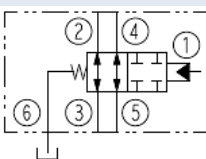




Overview



Symbol



Description

The PD12-S62 is a screw-in, cartridge style, pilot operated, spool-type, normally closed, hydraulic directional valve

Operation

In the neutral position flow is allowed between ports 2 and 3 and between ports 4 and 5 bidirectionally. On remote pilot signal at port 1 the valve's spool shifts to block flow at all ports, the spring chamber is vented to the tank through port 6. The vented spring chamber allows the valve to be fully pressurized at ports 1, 2, 3, 4, and 5 without affecting required pilot pressure. Pressure at port 6 will affect required pilot pressure

Features

- Hardened spool and cage for long life.
- Optional sealed spool between ports 1 and 2.
- Choice of two bias spring values.
- Vented spring chamber.



Ratings

Pressure Ratings

Pressure rating 241 bar (3500 psi)

Flow Ratings

Maximum inlet flow 57 lpm (15 gpm) - **Note:** In any combination of flows between ports 2 and 3 and ports 4 and 5 (e.g. 3 + 12 gpm, 7 + 8 gpm, 10 + 5 gpm, etc)

Maximum internal leakage 246 ml/min (15 in³/min) - **Note:** At 207 bar (3000 bar)

Temperature Ratings

Operating fluid temperature -40 to 100 °C (-40 to 212 °F) - **Note:** With buna N seals
 -26 to 204 °C (-15 to 400 °F) - **Note:** With fluorocarbon seals
 -54 to 107 °C (-65 to 225 °F) - **Note:** With polyurethane seals

Storage temperature -40 to 70 °C (-40 to 160 °F)

Ambient temperature -40 to 90 °C (-40 to 194 °F)

Operating Parameters

Fluids Mineral based or synthetic hydraulic fluid with lubricating properties

Fluid viscosity range 7.4 to 420 cSt

Maximum operating contamination level 20/18/14 per ISO 4406

Properties

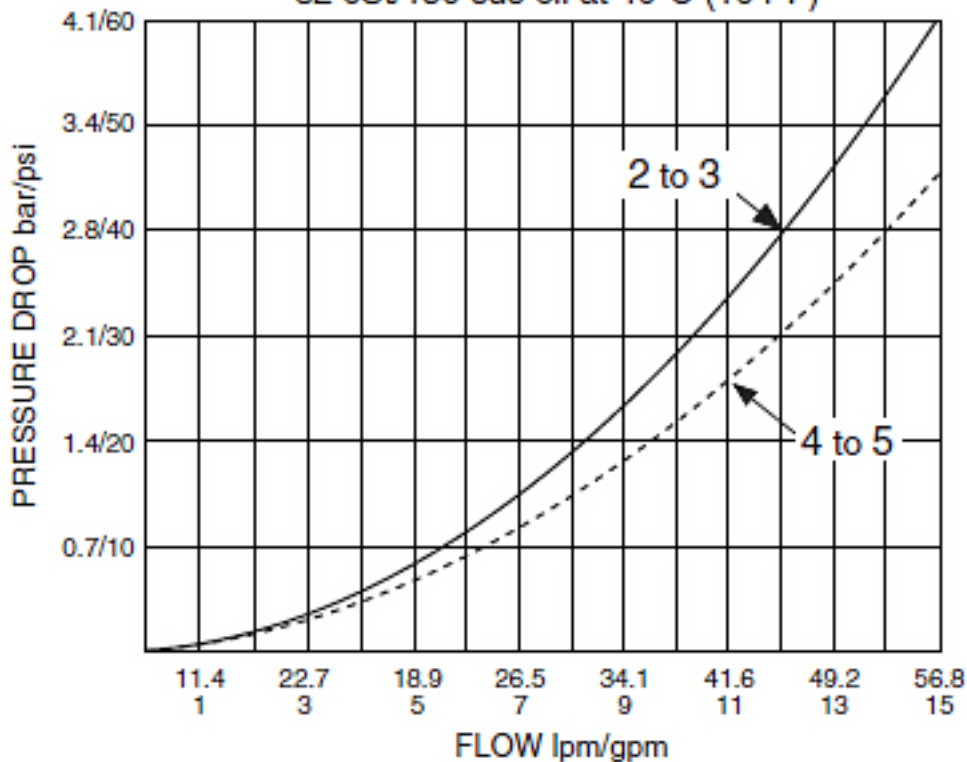
Unit weight 0.48 kg (1.06 lb)

Internal wetted surface area 373 cm²; (57.9 in²;))



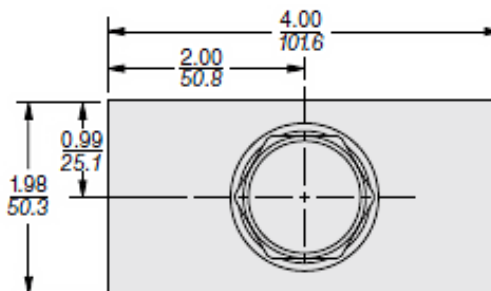
Performance

PRESSURE DROP vs. FLOW (Cartridge only)
32 cSt/150 sus oil at 40°C (104°F)





Dimensions



Materials

Materials

Cartridge: Weight: 0.48 kg. (1.06 lbs.) Steel with hardened work surfaces. Zinc-plated exposed surfaces. Buna N O-rings and polyester elastomer back-ups standard.

Ported Body: Weight: 4.05 kg (8.93 lb.) H-series ductile iron standard. Rated to 345 bar (5000 psi).

Installation Specifications

Cavity	VC12-S6
Cartridge installation torque	44.7 to 50.2 N-m (33 to 37 ft-lb)
Orientation restriction	None



Accessories

Seal kit SK12-S6X-BMMM - **Note:** (x = seal option)
Housings

Order Code

