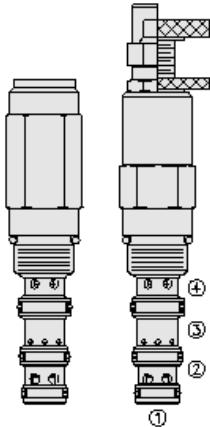
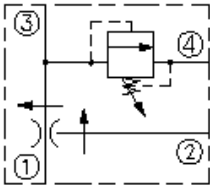




## Overview



### Symbol



### Description

The FRRV10-41F is a screw-in, cartridge type, combination valve includes a pressure compensated, non adjustable priority type flow regulator and a pressure relief valve. The valve is intended for use with mineral based or synthetic hydraulic fluids with lubricating properties.

### Operation

It maintains a constant flow rate from port 3 regardless of load pressure changes at priority port 3, or bypass port 2.

### Features

- Two valve functions in one, industry-common cavity.
- Adjustments cannot be backed out of the valve.
- Relief valve adjustments prohibit relief valve spring from going solid.
- Quiet, modulated response.
- Hardened parts for long life.

## Ratings

### Pressure Ratings

Pressure rating                      207 bar (3000 psi)  
   276 bar (4000 psi) - **Note:** Maximum system pressure

### Flow Ratings

Priority flow rating                      19.0 lpm (5.0 gpm) - **Note:** Maximum  
Inlet flow rating                        38.0 lpm (10.0 gpm) - **Note:** Maximum

