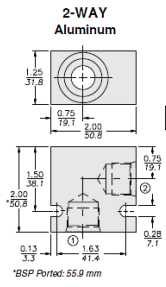




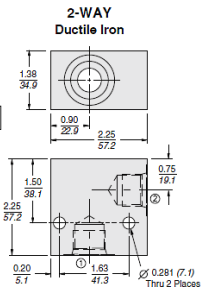
Ratings

Pressure rating	207 bar (3000 psi)	- Note:
	Aluminum	
	345 bar (5000 psi)	- Note:
	Ductile iron	
Material	6061-T6511	- Note:
	Aluminum	
	Dura-bar	- Note: Ductile iron

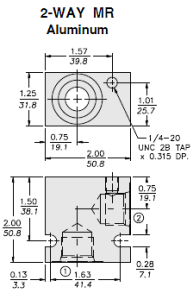
Dimensions



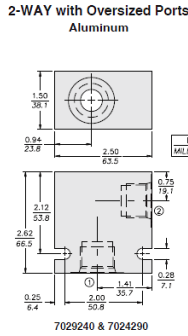
SAE 8 Ported Housing shown



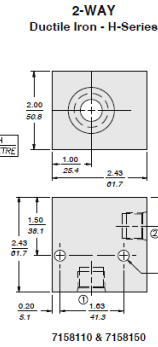
SAE 8 Ported Housing shown



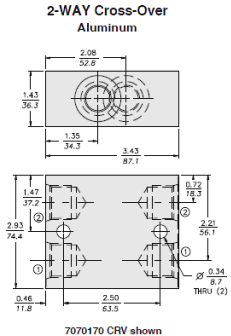
7026180 - MR For Lock-Down Bracket Use



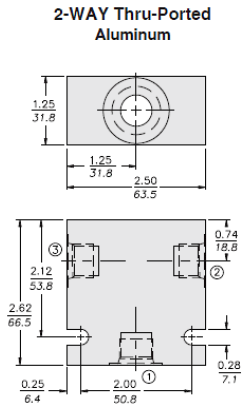
7029240 & 7024290



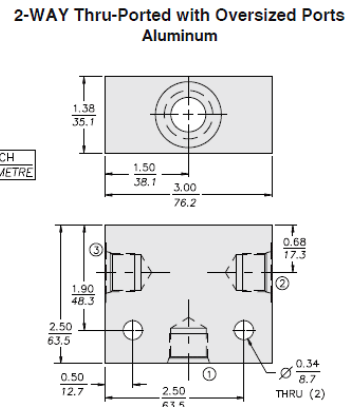
7158110 & 7158150



7070170 CRV shown



7025660 & 7025680



7027080 shown



Part Numbers

CAVITY: VC10-2

P/N: 7024260	Code: 6T	Material: ALUMINUM			
Port 1	Port 2	Port 3	Port 4	Port 5	Port 6
SAE 6	SAE 6				
P/N: 7024280	Code: 8T	Material: ALUMINUM			
Port 1	Port 2	Port 3	Port 4	Port 5	Port 6
SAE 8	SAE 8				
P/N: 7025680	Code: 8T	Material: ALUMINUM			
Port 1	Port 2	Port 3	Port 4	Port 5	Port 6
SAE 8	SAE 8				

NOTE: Through ported

P/N: 7026180	Code: 8TL	Material: ALUMINUM			
Port 1	Port 2	Port 3	Port 4	Port 5	Port 6
SAE 8	SAE 8				

NOTE: Drilled and tapped for lockdown bracket

P/N: 7151400	Code: 6TD	Material: DUCTILE IRON			
Port 1	Port 2	Port 3	Port 4	Port 5	Port 6
SAE 6	SAE 6				
P/N: 7151410	Code: 8TD	Material: DUCTILE IRON			
Port 1	Port 2	Port 3	Port 4	Port 5	Port 6
SAE 8	SAE 8				
P/N: 7028220	Code: 2B	Material: ALUMINUM			
Port 1	Port 2	Port 3	Port 4	Port 5	Port 6
1/4" BSP	1/4" BSP				
P/N: 7028230	Code: 3B	Material: ALUMINUM			
Port 1	Port 2	Port 3	Port 4	Port 5	Port 6
3/8" BSP	3/8" BSP				
P/N: 7028240	Code: 4B	Material: ALUMINUM			
Port 1	Port 2	Port 3	Port 4	Port 5	Port 6
1/2" BSP	1/2" BSP				
P/N: 7151450	Code: 4BD	Material: DUCTILE IRON			
Port 1	Port 2	Port 3	Port 4	Port 5	Port 6
1/2" BSP	1/2" BSP				