

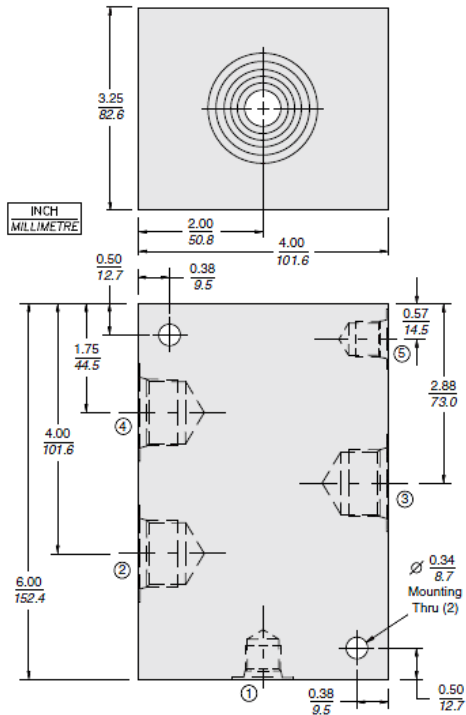


## Ratings

Pressure rating	207 bar (3000 psi)	- Note:
	Aluminum	
Material	345 bar (5000 psi)	- Note:
	Ductile iron	
	6061-T6511	- Note:
	Aluminum	
	Dura-bar	- Note: Ductile iron

## Dimensions

**5-WAY 16-S5**  
Ductile Iron, H-Series, HPD-Type



## Part Numbers

Part no.	Model code	Material	Port 1	Port 2	Port 3	Port 4	Port 5	Port 6	Mfg. loc.	Note
7159960	16HT	Ductile iron	SAE 6	SAE 16	SAE 16	SAE 16	SAE 6		U.S.	