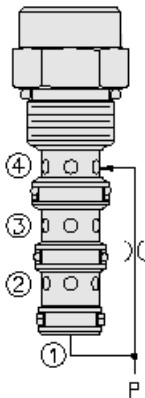




## Overview



### Description

The EC10-40 is a screw-in cartridge style, pressure compensating element, intended for use with a remote fixed or variable orifice to yield a three port (bypass type), pressure compensated, flow regulating hydraulic valve

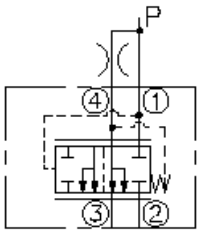
### Operation

The EC10-40 maintains a constant flow rate from port 3 regardless of load pressure changes in the circuit downstream of port 3. The EC10-40 is a priority type valve, delivering pump flow first to port 3 then bypassing excess to port 2. All ports may be fully pressurized

### Features

- Hardened parts for long life.
- Quiet, modulated response.
- Industry-common cavity.

### Symbol



## Ratings

### Pressure Ratings

Pressure rating	241 bar (3500 psi)
Proof pressure	345 bar (5000 psi)
Burst pressure	896 bar (13000 psi)

### Flow Ratings

Inlet flow rating	57 lpm (15 gpm)	- <b>Note:</b> Maximum
Regulated flow	38 lpm (10 gpm)	- <b>Note:</b> Maximum, with spring 11 bar (160 psi)

### Temperature Ratings

Operating fluid temperature	-40 to 100 °C (-40 to 212 °F)	- <b>Note:</b> With buna N seals
	-26 to 204 °C (-15 to 400 °F)	- <b>Note:</b> With viton seals
	-54 to 107 °C (-65 to 225 °F)	- <b>Note:</b> With polyurethane seals
Storage temperature	-40 to 70 °C (-40 to 160 °F)	
Ambient temperature	-40 to 90 °C (-40 to 160 °F)	

## Operating Parameters

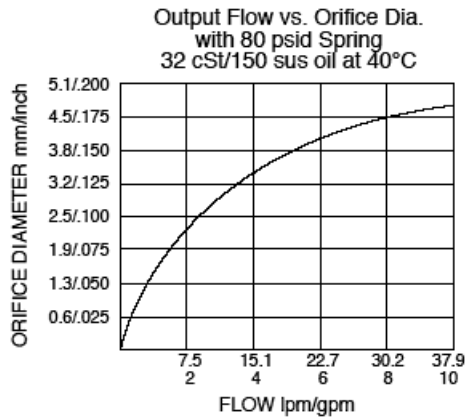
Fluids	Mineral based or synthetic hydraulic fluid with lubricating properties
--------	--

## Properties

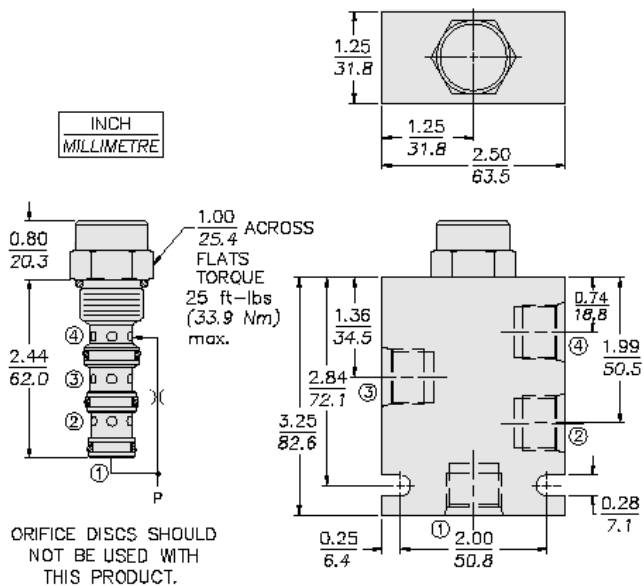
Unit weight	0.15 kg (0.39 lb)
Internal wetted surface area	157 cm <sup>2</sup> (24.3 in <sup>2</sup> )



## Performance



## Dimensions



## Materials

### Materials

**Cartridge:** Weight: 0.16 kg (0.35 lb); Steel with hardened work surfaces. Zinc-plated exposed surfaces; Buna N O-rings and polyester elastomer back-ups standard.

**Standard Ported Body:** Weight: 0.34 kg (0.75 lb); Anodized high-strength 6061 T6 aluminum alloy, rated to 207 bar (3000 psi); Ductile iron bodies available; dimensions may differ.

## Installation Specifications

Cavity	VC10-4
Cartridge installation torque	45 to 50 N-m (33 to 37 ft-lb)
Orientation restriction	None

## Accessories

Seal kit	SK10-4X-TMB	- Note: X = seal option
Housings		



**Order Code**

POSITION	CODE	DESCRIPTION
		EC10-40-H-J-R
H		Line Body
H	0	No Body
H	6T	Aluminum SAE 6
H	8T	Aluminum SAE 8
H	6TD	Ductile Iron SAE 6
J		Seal
J	N	Buna-N
J	V	Fluorocarbon
J	P	Polyurethane
J	U	PPDI Urethane
R		Compensator Spring
R	40	40 Compensator Spring
R	80	80 Compensator Spring
R	160	160 Compensator Spring

