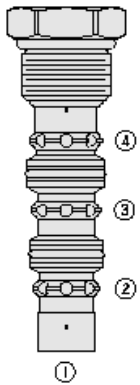




## Overview



### Description

The HS52-42 is a screw-in, cartridge style, closed in transition, 2-position, 3-way, hot oil shuttle valve for use with general purpose hydraulic fluids.

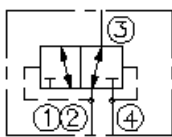
### Operation

The valve CAN be used for hydrostatic transmissions to direct charge pump oil to a heat exchanger or to tank.

### Features

- Hardened parts for long life.
- Industry-common cavity.

## Symbol



## Ratings

### Pressure Ratings

Pressure rating 345 bar (5000 psi)

### Temperature Ratings

Operating fluid temperature -40 to 120 °C (-40 to 248 °F)

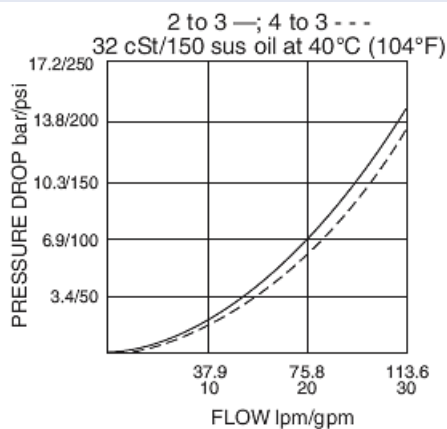
### Flow Ratings

Maximum internal leakage 17 in<sup>3</sup>/min - **Note:** At 345 bar (5000 psi)  
Flow performance See graph

## Properties

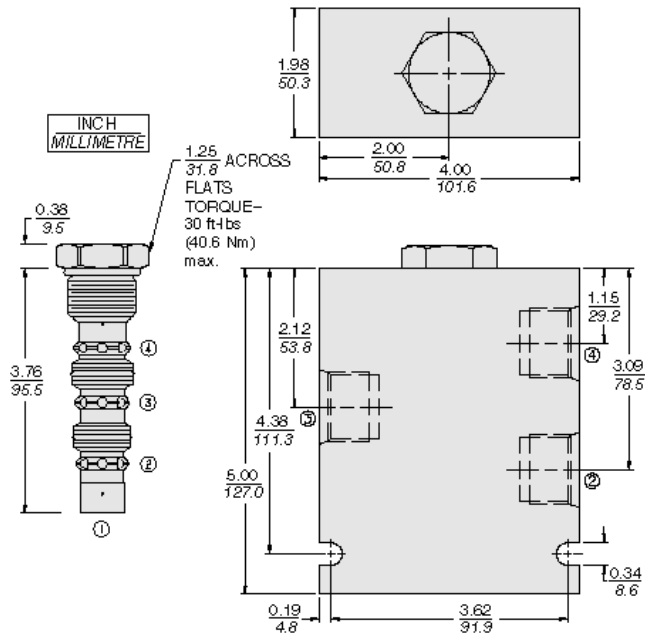
Materials steel with work surfaces hardened. External surfaces are zinc plated. Buna N o-rings are standard.  
Unit weight 0.25 kg (0.55 lb)

## Performance





## Dimensions



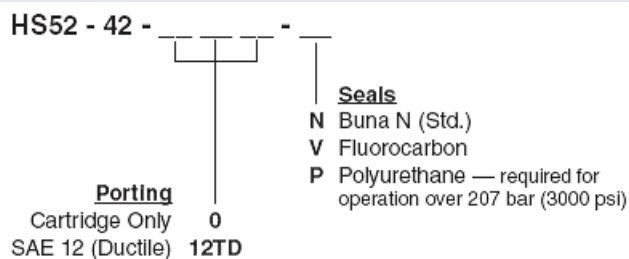
## Installation Specifications

Cavity	VC12-4
Cartridge installation torque	44.7 to 50.2 N-m (33 to 37 ft-lb)

## Accessories

Seal kit	SK52-4N-MM	- <b>Note:</b> Buna N
	SK52-4V-MM	- <b>Note:</b> Viton
	SK52-4P-MM	- <b>Note:</b> Polyurethane
Housings		

## Order Code



POSITION	CODE	DESCRIPTION
		HS52-42-H-J
H		Line Body
H	0	No Body
H	10T	Aluminum SAE 10
H	12T	Aluminum SAE 12
H	6B	Aluminum BSPP 3/4" (6)
J		Seal
J	N	Buna-N
J	V	Fluorocarbon
J	P	Polyurethane