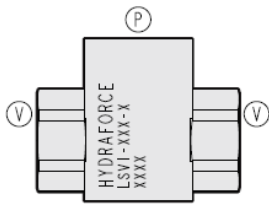




## Overview



### Description

The LSV1 is an in-line plumbed, low leak, load shuttling hydraulic check valve for use as a directional selector.

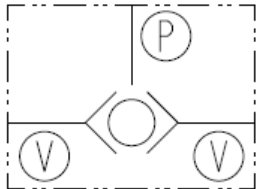
### Operation

The LSV1 will allow flow from the higher pressure of either "V" port to "P" port.

### Features

- Rapid response to load direction changes.
- Inline body for easy external plumbing
- Choice of port styles

### Symbol



## Ratings

### Pressure Ratings

Pressure rating 241 bar (3500 psi)

### Flow Ratings

Flow rating See performance graph  
 Maximum internal leakage 0.05 ml/min (1 drops/min) - **Note:** At 207 bar (3000 psi)

### Temperature Ratings

Operating fluid temperature	-40 to 100 °C (-40 to 212 °F)	- <b>Note:</b> With buna N seals
	-26 to 204 °C (-15 to 400 °F)	- <b>Note:</b> With fluorocarbon seals
	-54 to 107 °C (-65 to 225 °F)	- <b>Note:</b> With polyurethane seals
Storage temperature	-40 to 70 °C (-40 to 160 °F)	
Ambient temperature	-40 to 90 °C (-40 to 194 °F)	

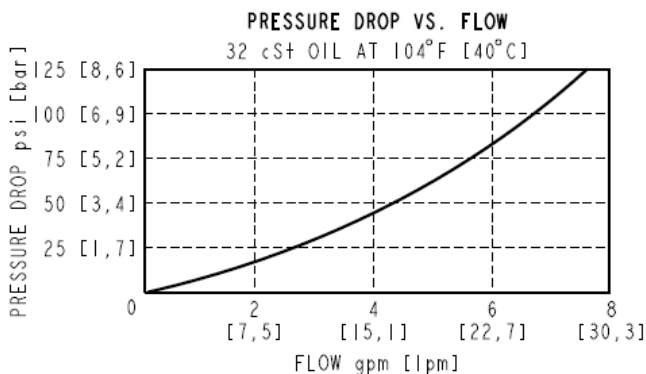
## Operating Parameters

Fluids	Mineral based or synthetic hydraulic fluid with lubricating properties
Fluid viscosity range	7.4 to 420 cSt
Maximum operating contamination level	20/18/14 per ISO 4406

## Properties

Unit weight	0.12 kg (0.27 lb)	- <b>Note:</b> LSV1-2P/6T
	0.21 kg (0.46 lb)	- <b>Note:</b> LSV1-6TS

## Performance





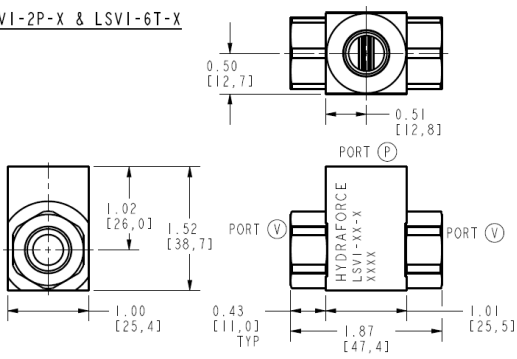
Dimensions

INCH

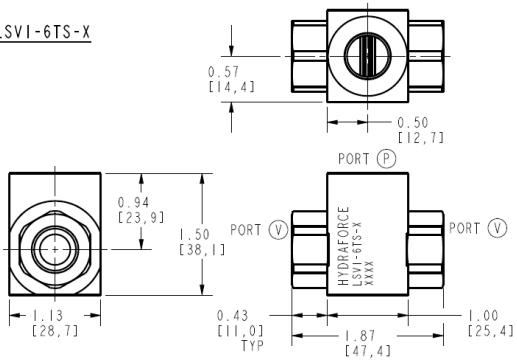
[mm]

OUTLINE

LSVI-2P-X & LSVI-6T-X



LSVI-6TS-X



ALL DIMENSIONS ARE FOR REFERENCE ONLY.

Accessories

Seal kit

Non-serviceable

Order Code

ORDERING INFORMATION

LSVI-XXX-X

BASE MODEL NUMBER

PORTING:

SAE 6 - 6T

SAE 6 (STEEL) - 6TS

SEALS:

BUNA N - N

VITON - V

POLYURETHANE - P

POSITION	CODE	DESCRIPTION
		LSV1-H-J
H		Porting
H	6T	Aluminum SAE 6
H	6TS	Steel SAE 6
J		Seals
J	N	Buna N
J	V	Fluorocarbon
J	P	Polyurethane