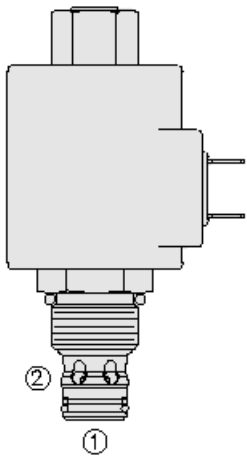




Overview



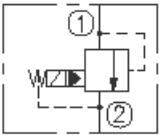
Description

SVRV10-26X is a normally open, solenoid operated, spool type, screw in relief valve. When the coil is activated, the pilot closes the drain flow and the spool closes port 2. In this position, the valve works as a relief valve, relieving flow from port 1 to port 2. The pilot opens when the pressure at port 1 exceeds the set pressure. Pilot flow is discharged to port 2.

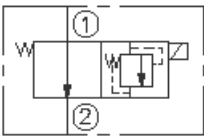
Features

- Various pressure ranges.
- Continuous-duty rated coil.
- Hardened spool and cage for long life.
- Optional coil voltages and terminations.
- Cartridges are voltage interchangeable.
- Efficient wet-armature construction.
- Optional waterproof E&C Coils rated up to IP69K.
- Industry common cavity.

Symbol



Expanded:





Ratings

Pressure Ratings

Pressure rating	296.5 bar (4300 psi)	
Proof pressure	344.7 bar (5000 psi)	
Burst pressure	689.5 bar (10000 psi)	- Note: Minimum to seat press fit
Relief pressure defined	Pressure evident at 7.57 lpm (2 gpm)	
Reseat pressure	80% of relief pressure setting	
Relief pressure range	20.7 to 296.5 bar (300 to 4300 psi)	- Note: From zero to maximum control current
Pressure drop	6.6 bar (95 psi)	- Note: At 83.3 lpm (22 gpm)
Pressure rise	0.73 bar/lpm (40 psi/gpm)	

Flow Ratings

Flow rating	83.3 lpm (22 gpm)	
Maximum pilot flow	350 ml/min (21.4 in ³ /min)	- Note: And leakage at 80% of relief pressure setting: max

Other Ratings

Response	65 ms	- Note: Flow pressure 7.6 lpm (2 gpm) 275.8 bar (4000 psi)
Cycle life	970000 cycles at 241.3 bar (3500 psi) 15.1 lpm (4 gpm) 296.5 bar (4300 psi) 9.5 lpm (2.5 gpm)	
Corrosion protection	960 hr salt spray per ASTM b117 (model number - gsvrv10-26x)	

Temperature Ratings

Operating fluid temperature	-40 to 100 °C (-40 to 212 °F)	- Note: With buna N seals
	-26 to 204 °C (-15 to 400 °F)	- Note: With fluorocarbon seals
	-54 to 107 °C (-65 to 225 °F)	- Note: With polyurethane seals
Storage temperature	-40 to 70 °C (-40 to 160 °F)	
Ambient temperature	-40 to 70 °C (-40 to 160 °F)	

Operating Parameters

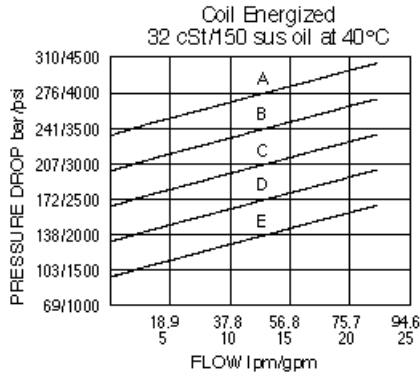
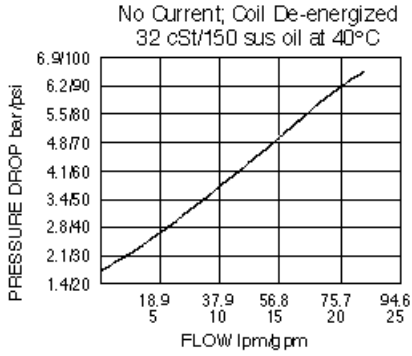
Fluids	Mineral based or synthetic with lubricating properties
Fluid viscosity range	7.4 to 420 cSt
Maximum operating contamination level	18/16/13 per ISO 4406

Properties

Unit weight	0.19 kg (0.42 lb)
Internal wetted surface area	183 cm ² (28.4 in ²)

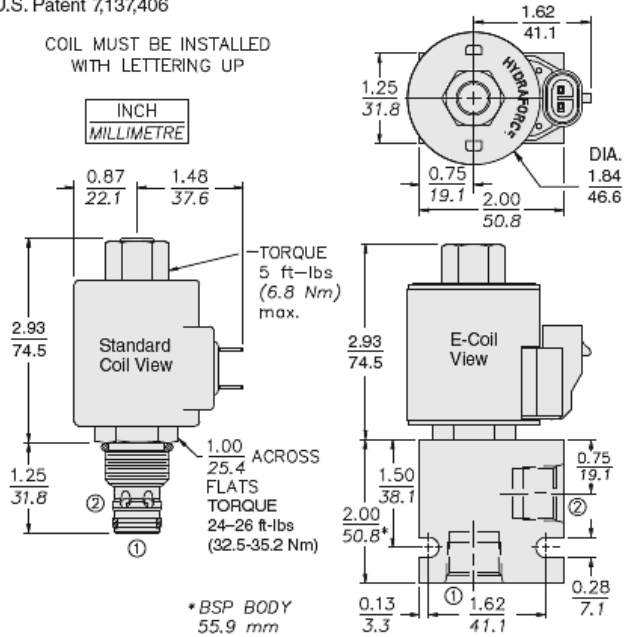


Performance



Dimensions

U.S. Patent 7,137,406



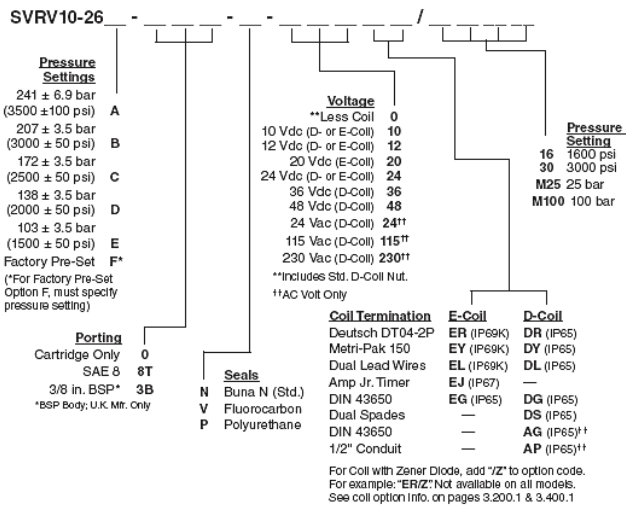
Installation Specifications

Cavity	VC10-2
Cartridge installation torque	32.5 to 35.2 N-m (24 to 26 ft-lb)
Maximum allowable torque	54.2 N-m (40 ft-lb)
Coil nut torque	5.4 to 6.8 N-m (4 to 5 ft-lb)
Orientation restriction	None

Accessories

Seal kit	SK10-2X-B (x = seal option)	- Note: X = seal option
----------	-----------------------------	--------------------------------

Order Code



Model Options

SVRV10-26D-H-J-L/S

D Pressure Setting

CODE	DESCRIPTION
A	241.3 bar (3500 psi) Relief Pressure
B	206.8 bar (3000 psi) Relief Pressure
C	172.4 bar (2500 psi) Relief Pressure
D	137.9 bar (2000 psi) Relief Pressure
E	103.4 bar (1500 psi) Relief Pressure
F	20.7 to 296.5 bar (300 to 4300 psi) Factory Preset Relief Pressure

H Line Body

CODE	DESCRIPTION
0	No Body
6T	Aluminum SAE 6
8T	Aluminum SAE 8
6TD	Ductile Iron SAE 6
8TD	Ductile Iron SAE 8
2B	Aluminum BSPP 1/4" (2)
3B	Aluminum BSPP 3/8" (3)
4B	Aluminum BSPP 1/2" (4)
4BD	Ductile Iron BSPP 1/2" (4)

J Seal

CODE	DESCRIPTION
N	Buna-N
V	Fluorocarbon
P	Polyurethane
U	PPDI Urethane

L Coil

CODE	DESCRIPTION
0	No Coil
10DG	10 VDC, D-Coil, DIN 43650



CODE	DESCRIPTION
10DL	10 VDC, D-Coil, Dual Lead Wires
10DR/D	10 VDC, D-Coil, Deutsch with Diode
10DS	10 VDC, D-Coil, Dual Spade
10EL	10 VDC, E-Coil, Dual Lead Wires
10ER	10 VDC, E-Coil, Deutsch
10ER/Z	10 VDC, E-Coil, Deutsch with Zener Diode
12DG	12 VDC, D-Coil, DIN 43650
12DL	12 VDC, D-Coil, Dual Lead Wires, 18 inches long
12DL/36	12 VDC, D-Coil, Dual Lead Wires, 36 inches long
12DL/W	12 VDC, D-Coil, Dual Lead Wires with Weatherpak
12DL/W/D	12 VDC, D-Coil, Dual Lead Wires with Weatherpak with Diode
12DR	12 VDC, D-Coil, Deutsch
12DR/D	12 VDC, D-Coil, Deutsch with Diode
12DR/Z	12 VDC, D-Coil, Deutsch with Zener Diode
12DS	12 VDC, D-Coil, Dual Spade
12EG	12 VDC, E-Coil, DIN 43650
12EJ	12 VDC, E-Coil, AMP Jr.
12EL	12 VDC, E-Coil, Dual Lead Wires, 18 inches long
12EL/36	12 VDC, E-Coil, Dual Lead Wires, 36 inches long
12EL/W/Z	12 VDC, E-Coil, Dual Lead Wires with WeatherPak and Zener Diode
12EL/Z	12 VDC, E-Coil, Dual Lead Wires with Zener Diode
12ER	12 VDC, E-Coil, Deutsch
12ER/Z	12 VDC, E-Coil, Deutsch with Zener Diode
12EY	12 VDC, E-Coil, Metri-Pack 150
12EY/Z	12 VDC, E-Coil, Metri-Pack 150 with Zener Diode
20DR/D	20 VDC, D-Coil, Deutsch with Diode
20DS	20 VDC, D-Coil, Dual Spade
20ER	20 VDC, E-Coil, Deutsch
24AG	24 VDC, D-Coil, DIN 43650
24AP	24 VDC, D-Coil, 1/2" Conduit and Dual Lead Wires
24DG	24 VDC, D-Coil, DIN 43650
24DL	24 VDC, D-Coil, Dual Lead Wires
24DL/W	24 VDC, D-Coil, Dual Lead Wires with Weatherpak
24DL/W/D	24 VDC, D-Coil, Dual Lead Wires with Weatherpak with Diode
24DP	24 VDC, D-Coil, 1/2" Conduit and Dual Lead Wires
24DR	24 VDC, D-Coil, Deutsch
24DR/D	24 VDC, D-Coil, Deutsch with Diode
24DS	24 VDC, D-Coil, Dual Spade
24EG	24 VDC, E-Coil, DIN 43650
24EJ	24 VDC, E-Coil, AMP Jr.
24EL	24 VDC, E-Coil, Dual Lead Wires, 18 inches long
24EL/36	24 VDC, E-Coil, Dual Lead Wires, 36 inches long



CODE	DESCRIPTION
24EL/W/Z	24 VDC, E-Coil, Dual Lead Wires with WeatherPak and Zener Diode
24ER	24 VDC, E-Coil, Deutsch
24ER/Z	24 VDC, E-Coil, Deutsch with Zener Diode
24EY	24 VDC, E-Coil, Metri-Pack 150
24EY/Z	24 VDC, E-Coil, Metri-Pack 150 with Zener Diode
36DS	36 VDC, D-Coil, Dual Spade
115AG	115 VAC, D-Coil, DIN 43650
115AP	115 VAC, D-Coil, 1/2" Conduit and Dual Lead Wires
230AG	230 VAC, D-Coil, DIN 43650
230AP	230 VAC, D-Coil, 1/2" Conduit and Dual Lead Wires

S Pressure Setting

CODE	DESCRIPTION
XX	20.7 to 296.5 bar (300 to 4300 psi)