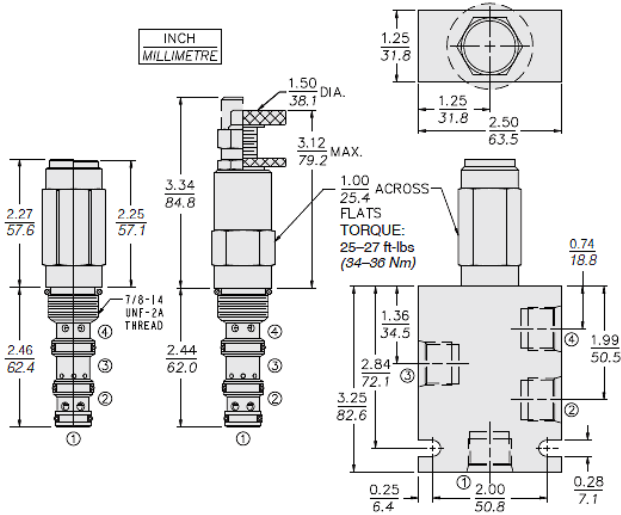






## Dimensions



## Materials

### Materials

**Cartridge:** Weight: 0.34 kg. (0.70 lbs.); Steel with hardened work surfaces. Zinc-plated exposed surfaces; Buna N O-rings and polyester elastomer back-ups standard. Anodized aluminum knobs and caps.

**Standard Ported Body:** Weight: 0.36 kg. (0.80 lbs.); Anodized high-strength 6061 T6 aluminum alloy, rated to 207 bar (3000 psi); Ductile iron bodies available; dimensions may differ. For Pressure Adjustment option details,

## Installation Specifications

Cavity

VC10-4

## Order Code

