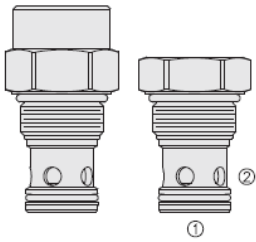




Overview



Description

The HCV16-20X is a screw-in, cartridge style, hydraulic check valve for use as a blocking or load-holding device for high pressure applications.

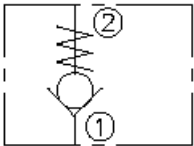
Operation

The check valve allows flow from port 1 to 2, while normally blocking flow in the opposite direction. The cartridge valve has a fully guided poppet which is spring biased closed until sufficient pressure is applied at port 1 to open to port 2.

Features

- Hardened seat for long life and low leakage.
- Optional bias springs for back-pressure application flexibility.
- All HyPerformance products are tested to the rigorous standards of the NFPA specification T2.6.1
- All HyPerformance valves are tested at a verification level of 90% and an assurance of 99%.

Symbol



Ratings

Pressure Ratings

Pressure rating	350 bar (5075 psi) 420 bar (6090 psi)	- Note: 10% cycle life
Proof pressure	690 bar (10000 psi)	
Burst pressure	1380 bar (20000 psi)	

Flow Ratings

Flow rating	151 lpm (40 gpm)	
Maximum internal leakage	0.25 ml/min (5 drops/min)	- Note: At 350 bar (5075 psi)

Other Ratings

Cycle life	One million cycles
------------	--------------------

Temperature Ratings

Operating fluid temperature	-40 to 100 °C (-40 to 212 °F)	- Note: With buna N seals
	-26 to 204 °C (-15 to 400 °F)	- Note: With fluorocarbon seals
	-54 to 107 °C (-65 to 225 °F)	- Note: With urethane seals
Storage temperature	-40 to 70 °C (-40 to 160 °F)	
Ambient temperature	-40 to 90 °C (-40 to 194 °F)	

Operating Parameters

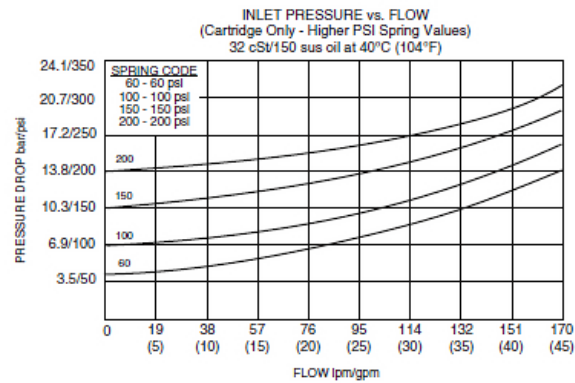
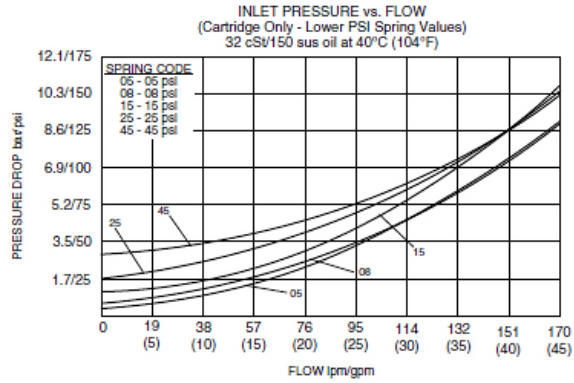
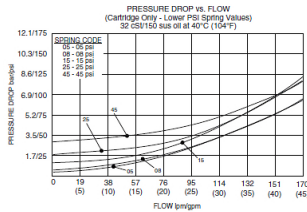
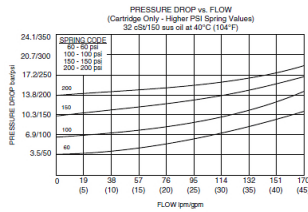
Fluids	Mineral based or synthetic hydraulic fluid with lubricating properties
Fluid viscosity range	7.4 to 420 cSt
Maximum operating contamination level	18/16/13 per ISO 4406

Properties

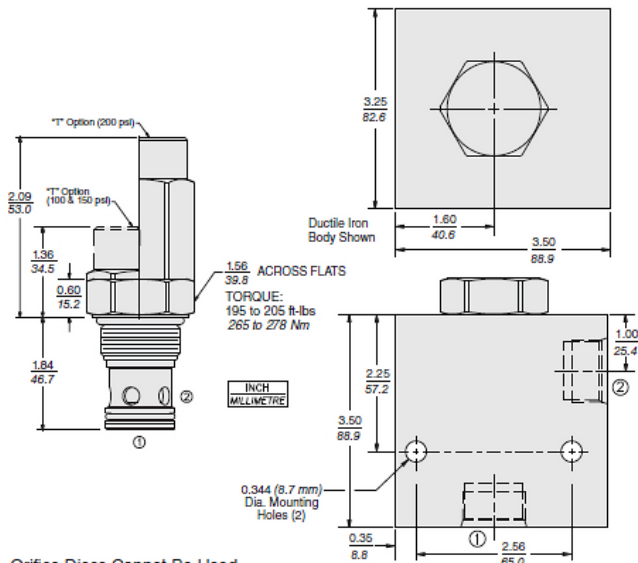
Unit weight	0.34 kg (0.74 lb)	
	0.46 kg (1.02 lb)	
	0.60 kg (1.32 lb)	
Internal wetted surface area	168 cm ² (26.01 in ²)	- Note: Regular adaptor
	245 cm ² (37.98 in ²)	- Note: Tall adaptor for 100 and 150 psi springs
	290 cm ² (44.89 in ²)	- Note: Tall adaptor for 200 psi spring



Performance



Dimensions



Orifice Discs Cannot Be Used with this Valve due to HyPerformance™ Cavity.

TORQUE:
195 to 205 ft-lbs
265 to 278 Nm

INCH
MILLIMETRE

Installation Specifications

Cavity	HVC16-2	
Cartridge installation torque	258 to 285 N-m (190 to 210 ft-lb) 237 to 250 N-m (175 to 185 ft-lb)	- Note: Steel/ductile iron cavity - Note: Aluminum cavity
Orientation restriction	None	

Accessories

Seal kit	SK16-2N-T SK16-2V-T SK16-2U-O	- Note: Buna N - Note: Fluorocarbon - Note: Urethane
Housings		



Order Code

HCV16-20		-	-	-	-	-
Adapter Option		Regular	Blank			
**Tall Cap		T				
** Required for 6.9 bar (100 psi), 10.3 bar (150 psi) and 13.8 bar (200 psi) spring options						
Porting		Cartridge Only	0			
SAE 16		16HT				
1 in. BSP*		8HB				
*BSP Body; U.K. Mfr. Only						
						Bias Spring Value
						05 0.35 bar (5 psi)
						08 0.6 bar (8 psi)
						15 1.0 bar (15 psi)
						25 1.7 bar (25 psi)
						45 3.5 bar (45 psi)
						60 4.1 bar (60 psi)
						100 6.9 bar (100 psi)
						150 10.3 bar (150 psi)
						200 13.8 bar (200 psi)
						Seals
						U PPDI Urethane
						Note: PPDI Urethane seals are recommended for pressures over 241 bar (3500 psi).

POSITION	CODE	DESCRIPTION
		HCV16-20-H-J-R
H		Line Body
H	0	No Body
J		Seal
J	N	Buna-N
J	V	Fluorocarbon
J	U	PPDI Urethane
R		Spring
R	5	5 psi Bias Spring
R	8	8 psi Bias Spring
R	15	15 psi Bias Spring
R	25	25 psi Bias Spring
R	45	45 psi Bias Spring
R	60	60 psi Bias Spring