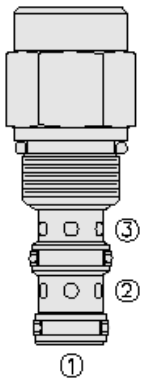




Overview



Description

The PD10-35 is a screw-in, cartridge style, pilot-operated, spool type, normally open, hydraulic directional valve.

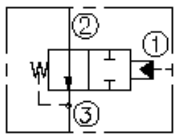
Operation

In neutral position the valve allows flow from port 2 to 3. The spring chamber is vented to port 3. On remote pilot signal at port 1, the valve's spool shifts to block flow from port 2 to 3. Pressure on port 3 will directly (1:1) affect the pilot pressure required and must be added to the bias spring value.

Features

- External vent-to-atmosphere.
- Range of bias springs available.
- Sealed spool option for bias spring options 110, 130 and 170.
- Hardened spool and cage for long life.
- Industry common cavity.

Symbol



Ratings

Pressure Ratings

Pressure rating 241 bar (3500 psi)

Temperature Ratings

Operating fluid temperature -40 to 120 °C (-40 to 248 °F)

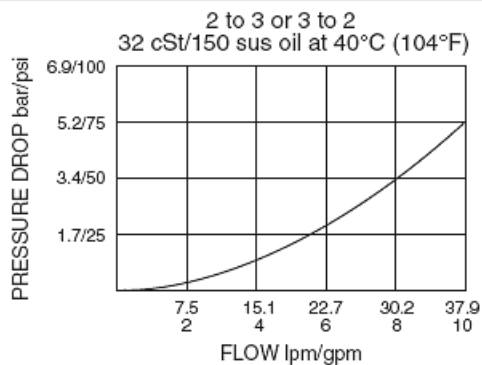
Flow Ratings

Maximum internal leakage 82 ml/min (5 in³/min) - **Note:** From port 1 to 2 and from port 2 to 3 (when piloted), at 207 bar (3000 psi)
0 lpm (0 gpm) - **Note:** From port 1 to 2 with sealed spool

Properties

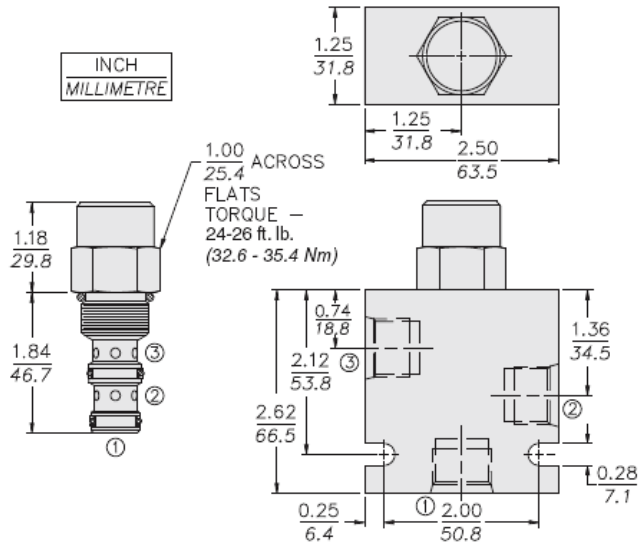
Materials steel with work surfaces hardened. External surfaces are zinc plated
Unit weight 0.15 kg (0.34 lb)

Performance





Dimensions



Installation Specifications

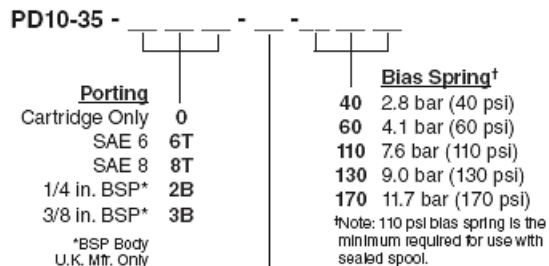
Cavity	VC10-3
Cartridge installation torque	32.6 to 35.4 N-m (24 to 26 ft-lb)

Accessories

Seal kit	SK10-3N-MM	- Note: Buna N
	SK10-3V-MM	- Note: Viton
	SK10-3P-MM	- Note: Polyurethane
Housings		



Order Code



- Seals**
- N** Buna N (Std.)
 - NS*** Buna N with Sealed Spool
 - V** Fluorocarbon
 - VS*** Fluorocarbon with Sealed Spool
 - P** Polyurethane
 - VS*** Polyurethane with Sealed Spool
- *Note: 110 psi bias spring is the minimum required for use with sealed spool.

POSITION	CODE	DESCRIPTION
		PD10-35-H-J-R
H		Line Body
H	0	No Body
H	6T	Aluminum SAE 6
H	8T	Aluminum SAE 8
H	6TD	Ductile Iron SAE 6
H	8TD	Ductile Iron SAE 8
H	3B	Aluminum BSPP 3/8" (3)
H	3BD	Ductile Iron BSPP 3/8" (3)
J		Seal
J	N	Buna-N
J	NS	Buna-N with a Sealed Spool
J	V	Fluorocarbon
J	VS	Fluorocarbon with a Sealed Spool
J	P	Polyurethane
J	PS	Polyurethane with a Sealed Spool
J	U	PPDI Urethane
J	US	PPDI Urethane with a Sealed Spool
R		Spring
R	40	40 psi Bias Spring
R	60	60 psi Bias Spring
R	110	110 psi Bias Spring
R	130	130 psi Bias Spring
R	170	170 psi Bias Spring