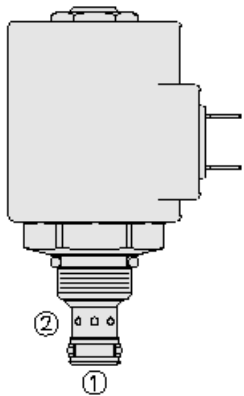




Overview



Description

The SV38-26 is a solenoid operated, 2 port, normally closed, direct-acting, needle type, screw in hydraulic cartridge valve, designed to function as a blocking or load-holding device for low flow circuits.

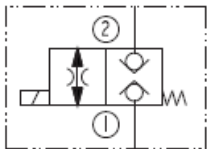
Operation

When de-energized, SV38-26 blocks flow in both directions, to pressure rating. If pressure on port 1 exceeds the rating, flow may pass from port 1 to 2. When energized, the needle point lifts to open the valve bidirectionally. Port 2 is the recommended load-holding port.

Features

- Double-blocking - can block flow in both directions.
- Relieving function from port 1 to 2.
- Hardened seat for long life and low leakage.
- Optional coil voltages and terminations.
- Cartridges are voltage interchangeable.
- Unitized, molded coil design.
- Manual override option.
- Industry common cavity.

Symbol



Ratings

Pressure Ratings

Pressure rating	207 bar (3000 psi)
Proof pressure	520 bar (7540 psi)

Flow Ratings

Maximum internal leakage	2 drops/min	- Note: Max at 207 bar (3000 psi)
--------------------------	-------------	-----------------------------------

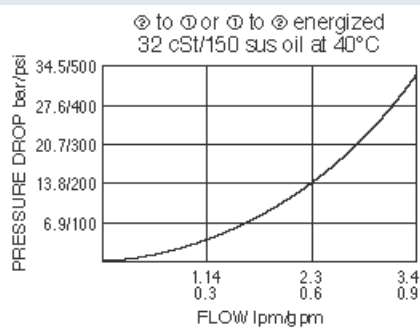
Temperature Ratings

Storage temperature	-40 to 120 °C (-40 to 250 °F)	- Note: Buna N
	-30 to 205 °C (-20 to 400 °F)	- Note: Fluorocarbon

Properties

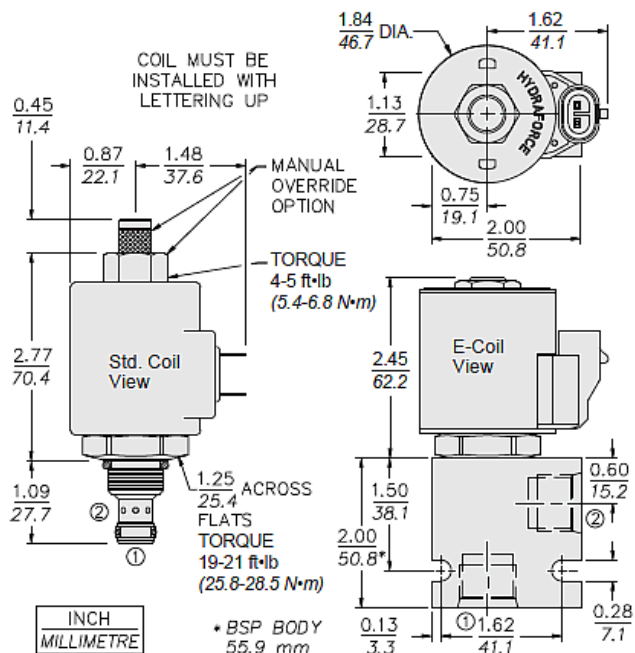
Materials	steel with hardened work surfaces zinc plated exposed
-----------	---

Performance





Dimensions



Installation Specifications

Cavity	VC08-2
Cartridge installation torque	25.8 to 28.5 N-m (19 to 21 ft-lb)
Coil nut torque	5.4 to 6.8 N-m (4 to 5 ft-lb)

Accessories

Seal kit	SK38-2X-M
Housings	
Coils	

Order Code

SV38-26			
Option		Voltage	Termination (VDC)
None (Blank)		Std. Coil	Std. Coil
152µ Screen	S	0 Less Coil**	DS Dual Spades
Manual Override	M	10 10 VDC†	DG DIN 43650
Manual Override	Y	12 12 VDC	DL Leadwires (2)
Manual Override	J	24 24 VDC	DL/W Leads w/Weatherpak® Connectors
For Manual Override options see page 1.001.1		36 36 VDC	DR Deutsch DT04-2P
		48 48 VDC	
Porting		24 24 VAC	Termination (VAC)
Cartridge Only	0	115 115 VAC	Std. Coil
SAE 8	8T	230 230 VAC	AG DIN 43650
3/8 in. BSP*	3B	**Includes Std. Coil Nut	AP 1/2 in. Conduit
*BSP Body, U.K. Mfr. Only		† DS, DW or DL terminations only.	Termination (VDC)
		E-Coil	E-Coil
Seals		10 10 VDC	ER Deutsch DT04-2P (IP69K Rated)
Buna N (Std.)	N	12 12 VDC	EY Metri-Pack® 150 (IP69K Rated)
Fluorocarbon	V	20 20 VDC	
		24 24 VDC	
			Coils with internal diode are available. Consult factory.

POSITION	CODE	DESCRIPTION
		SV38-26EG-H-J-L
E		Manual Override
E	BLANK	NONE
E	J	Momentary Pull Override, #10-32 threads
E	M	Two Position Override, Red Knurled Knob



POSITION	CODE	DESCRIPTION
E	Y	Momentary Pull Override, Red Knurled Knob
G		Screen
G	BLANK	NONE
G	S	100 Mesh Screen
H		Line Body
H	0	No Body
H	4T	Aluminum SAE 4
H	6T	Aluminum SAE 6
H	8T	Aluminum SAE 8
H	6TD	Ductile Iron SAE 6
H	8TD	Ductile Iron SAE 8
H	2B	Aluminum BSPP 1/4" (2)
H	3B	Aluminum BSPP 3/8" (3)
H	3BD	Ductile Iron BSPP 3/8" (3)
J		Seal
J	N	Buna-N
J	V	Fluorocarbon
J	P	Polyurethane
J	U	PPDI Urethane
L		Coil
L	0	No Coil
L	10DG	10 VDC, D-Coil, DIN 43650
L	10DL	10 VDC, D-Coil, Dual Lead Wires
L	10DR/D	10 VDC, D-Coil, Deutsch with Diode
L	10DS	10 VDC, D-Coil, Dual Spade
L	10EL	10 VDC, E-Coil, Dual Lead Wires
L	10ER	10 VDC, E-Coil, Deutsch
L	10ER/Z	10 VDC, E-Coil, Deutsch with Zener Diode
L	12DG	12 VDC, D-Coil, DIN 43650
L	12DL	12 VDC, D-Coil, Dual Lead Wires, 18 inches long
L	12DL/36	12 VDC, D-Coil, Dual Lead Wires, 36 inches long
L	12DL/W	12 VDC, D-Coil, Dual Lead Wires with Weatherpak
L	12DL/W/D	12 VDC, D-Coil, Dual Lead Wires with Weatherpak with Diode
L	12DR	12 VDC, D-Coil, Deutsch
L	12DR/D	12 VDC, D-Coil, Deutsch with Diode
L	12DR/Z	12 VDC, D-Coil, Deutsch with Zener Diode
L	12DS	12 VDC, D-Coil, Dual Spade
L	12EG	12 VDC, E-Coil, DIN 43650
L	12EJ	12 VDC, E-Coil, AMP Jr.
L	12EL	12 VDC, E-Coil, Dual Lead Wires, 18 inches long
L	12EL/36	12 VDC, E-Coil, Dual Lead Wires, 36 inches long
L	12EL/W/Z	12 VDC, E-Coil, Dual Lead Wires with WeatherPak and Zener Diode
L	12EL/Z	12 VDC, E-Coil, Dual Lead Wires with Zener Diode



POSITION	CODE	DESCRIPTION
L	12ER	12 VDC, E-Coil, Deutsch
L	12ER/Z	12 VDC, E-Coil, Deutsch with Zener Diode
L	12EY	12 VDC, E-Coil, Metri-Pack 150
L	12EY/Z	12 VDC, E-Coil, Metri-Pack 150 with Zener Diode
L	20DR/D	20 VDC, D-Coil, Deutsch with Diode
L	20DS	20 VDC, D-Coil, Dual Spade
L	20ER	20 VDC, E-Coil, Deutsch
L	24AG	24 VDC, D-Coil, DIN 43650
L	24AP	24 VDC, D-Coil, 1/2" Conduit and Dual Lead Wires
L	24DG	24 VDC, D-Coil, DIN 43650
L	24DL	24 VDC, D-Coil, Dual Lead Wires
L	24DL/W	24 VDC, D-Coil, Dual Lead Wires with Weatherpak
L	24DL/W/D	24 VDC, D-Coil, Dual Lead Wires with Weatherpak with Diode
L	24DP	24 VDC, D-Coil, 1/2" Conduit and Dual Lead Wires
L	24DR	24 VDC, D-Coil, Deutsch
L	24DR/D	24 VDC, D-Coil, Deutsch with Diode
L	24DS	24 VDC, D-Coil, Dual Spade
L	24EG	24 VDC, E-Coil, DIN 43650
L	24EJ	24 VDC, E-Coil, AMP Jr.
L	24EL	24 VDC, E-Coil, Dual Lead Wires, 18 inches long
L	24EL/36	24 VDC, E-Coil, Dual Lead Wires, 36 inches long
L	24EL/W/Z	24 VDC, E-Coil, Dual Lead Wires with WeatherPak and Zener Diode
L	24ER	24 VDC, E-Coil, Deutsch
L	24ER/Z	24 VDC, E-Coil, Deutsch with Zener Diode
L	24EY	24 VDC, E-Coil, Metri-Pack 150
L	24EY/Z	24 VDC, E-Coil, Metri-Pack 150 with Zener Diode
L	36DS	36 VDC, D-Coil, Dual Spade
L	115AG	115 VAC, D-Coil, DIN 43650
L	115AP	115 VAC, D-Coil, 1/2" Conduit and Dual Lead Wires
L	230AG	230 VAC, D-Coil, DIN 43650
L	230AP	230 VAC, D-Coil, 1/2" Conduit and Dual Lead Wires