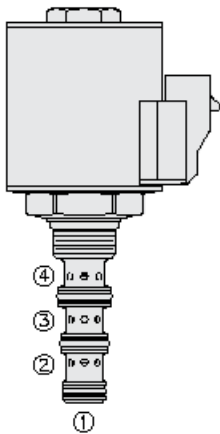




Overview



Description

The SV58-40 is a solenoid operated, 4 port, direct acting, spool type, screw in hydraulic directional valve for high pressure circuits.

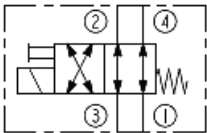
Operation

When de-energized, the SV58-40 flow paths are port 3 to port 2 and port 4 to port 1. When energized, the cartridges spool shifts to open port 3 to port 4 and port 2 to port 1. All ports are open at cross-over.

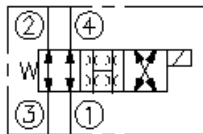
Features

- Continuous-duty rated coil.
- Hardened precision spool and cage for long life.
- Optional coil voltages and terminations.
- Efficient wet-armature construction.
- Cartridges are voltage interchangeable.
- Unitized, molded coil design.
- Optional waterproof E&E Coils rated up to IP69K.
- Compact size.

Symbol



TRANSITION:



Ratings

Flow Ratings

Flow rating	See performance chart
Maximum internal leakage	180 ml/min (11 in ³ /min) - Note: At 345 bar (5000 psi)

Pressure Ratings

Pressure rating	See performance chart
-----------------	-----------------------

Temperature Ratings

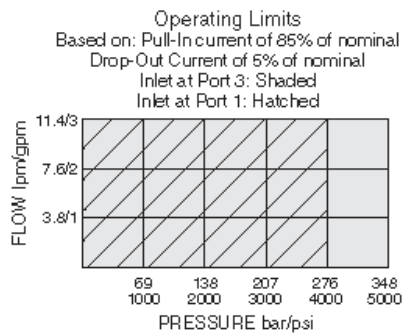
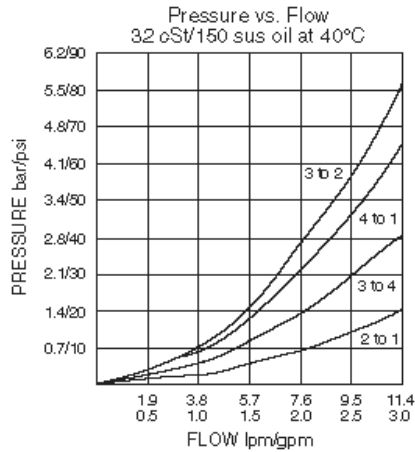
Operating fluid temperature	-40 to 100 °C (-40 to 212 °F)	- Note: With buna N seals
	-26 to 204 °C (-15 to 400 °F)	- Note: With viton seals
	-54 to 107 °C (-65 to 225 °F)	- Note: With polyurethane seals

Properties

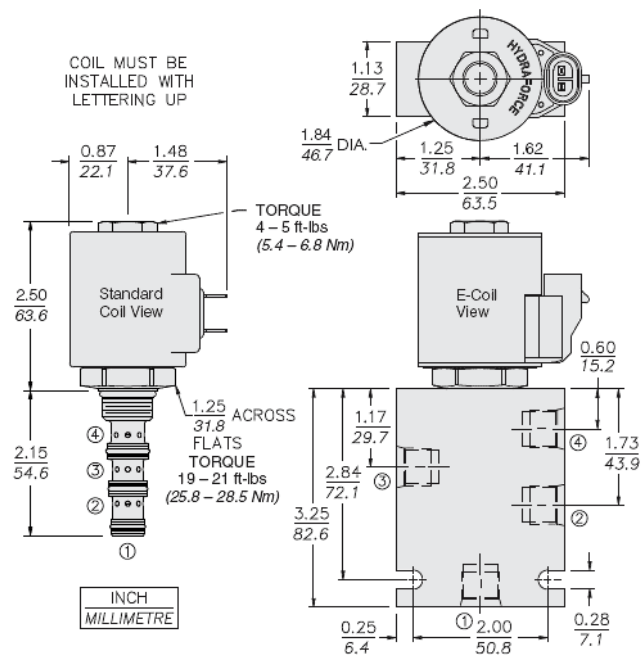
Materials	steel with hardened work surfaces zinc-plated exposed
-----------	---



Performance



Dimensions



Installation Specifications

Cavity	VC08-4
Cartridge installation torque	25.8 to 28.5 N-m (19 to 21 ft-lb)
Coil nut torque	5.4 to 6.8 N-m (4 to 5 ft-lb)

Order Code



SV58-40				
Option				
None (Blank)				
Porting		Voltage		Termination (VDC)
Cartridge Only	0	Std. Coil	DS	Std. D-Coil
SAE 6	6T	0 Less Coil**	DG	Dual Spades
1/4 in. BSP*	2B	10 10 VDC†	DL	DIN 43650
3/8 in. BSP*	3B	12 12 VDC	DLW	Leadwires (2)
*BSP Body; U.K. Mfr. Only		24 24 VDC	DR	Leads w/Weatherpak® Connectors
		36 36 VDC		Deutsch DT04-2P
		48 48 VDC		
		24 24 VAC		Termination (VAC)
		115 115 VAC		Std. D-Coil
		230 230 VAC	AG	DIN 43650
			AP	1/2 in. Conduit
Seals				Termination (VDC)
Buna N (Std.)	N	**Includes Std. Coil Nut		E-Coil
Fluorocarbon	V	† DS, DG or DL terminations only.	EG	DIN 43650 – IP65/IP67
Polyurethane	P		EJ	Amp Junior Timer – IP69K
Polyurethane seals are required for operation over 241 bar/3500 psi).		E-Coil	EL	Leadwires (2) – IP69K
		10 10 VDC	ER	Deutsch DT04-2P – IP69K
		12 12 VDC	EY	Metri-Pack® 150 – IP69K
		20 20 VDC		
		24 24 VDC		
Note: This is an 08-size valve which fits an 08-size cavity, but uses a 10-size coil.				Coils with internal diode are available. Consult factory.

POSITION	CODE	DESCRIPTION
		SV58-40E-H-J-L
E		Manual Override
E	BLANK	NONE
E	M	Two Position Override, Red Knurled Knob
H		Line Body
H	0	No Body
H	6T	Aluminum SAE 6
H	6TD	Ductile Iron SAE 6
H	3B	Aluminum BSPP 3/8" (3)
H	3BD	Ductile Iron BSPP 3/8" (3)
J		Seal
J	N	Buna-N
J	V	Fluorocarbon
J	P	Polyurethane
L		Coil
L	0	No Coil
L	10DG	10 VDC, D-Coil, DIN 43650
L	10DL	10 VDC, D-Coil, Dual Lead Wires
L	10DR/D	10 VDC, D-Coil, Deutsch with Diode
L	10DS	10 VDC, D-Coil, Dual Spade
L	10EL	10 VDC, E-Coil, Dual Lead Wires
L	10ER	10 VDC, E-Coil, Deutsch
L	10ER/Z	10 VDC, E-Coil, Deutsch with Zener Diode
L	12DG	12 VDC, D-Coil, DIN 43650
L	12DL	12 VDC, D-Coil, Dual Lead Wires, 18 inches long
L	12DL/36	12 VDC, D-Coil, Dual Lead Wires, 36 inches long
L	12DL/W	12 VDC, D-Coil, Dual Lead Wires with Weatherpak
L	12DL/W/D	12 VDC, D-Coil, Dual Lead Wires with Weatherpak with Diode
L	12DR	12 VDC, D-Coil, Deutsch
L	12DR/D	12 VDC, D-Coil, Deutsch with Diode
L	12DR/Z	12 VDC, D-Coil, Deutsch with Zener Diode
L	12DS	12 VDC, D-Coil, Dual Spade
L	12EG	12 VDC, E-Coil, DIN 43650



POSITION	CODE	DESCRIPTION
L	12EJ	12 VDC, E-Coil, AMP Jr.
L	12EL	12 VDC, E-Coil, Dual Lead Wires, 18 inches long
L	12EL/36	12 VDC, E-Coil, Dual Lead Wires, 36 inches long
L	12EL/W/Z	12 VDC, E-Coil, Dual Lead Wires with WeatherPak and Zener Diode
L	12EL/Z	12 VDC, E-Coil, Dual Lead Wires with Zener Diode
L	12ER	12 VDC, E-Coil, Deutsch
L	12ER/Z	12 VDC, E-Coil, Deutsch with Zener Diode
L	12EY	12 VDC, E-Coil, Metri-Pack 150
L	12EY/Z	12 VDC, E-Coil, Metri-Pack 150 with Zener Diode
L	20DR/D	20 VDC, D-Coil, Deutsch with Diode
L	20DS	20 VDC, D-Coil, Dual Spade
L	20ER	20 VDC, E-Coil, Deutsch
L	24AG	24 VDC, D-Coil, DIN 43650
L	24AP	24 VDC, D-Coil, 1/2" Conduit and Dual Lead Wires
L	24DG	24 VDC, D-Coil, DIN 43650
L	24DL	24 VDC, D-Coil, Dual Lead Wires
L	24DL/W	24 VDC, D-Coil, Dual Lead Wires with Weatherpak
L	24DL/W/D	24 VDC, D-Coil, Dual Lead Wires with Weatherpak with Diode
L	24DP	24 VDC, D-Coil, 1/2" Conduit and Dual Lead Wires
L	24DR	24 VDC, D-Coil, Deutsch
L	24DR/D	24 VDC, D-Coil, Deutsch with Diode
L	24DS	24 VDC, D-Coil, Dual Spade
L	24EG	24 VDC, E-Coil, DIN 43650
L	24EJ	24 VDC, E-Coil, AMP Jr.
L	24EL	24 VDC, E-Coil, Dual Lead Wires, 18 inches long
L	24EL/36	24 VDC, E-Coil, Dual Lead Wires, 36 inches long
L	24EL/W/Z	24 VDC, E-Coil, Dual Lead Wires with WeatherPak and Zener Diode
L	24ER	24 VDC, E-Coil, Deutsch
L	24ER/Z	24 VDC, E-Coil, Deutsch with Zener Diode
L	24EY	24 VDC, E-Coil, Metri-Pack 150
L	24EY/Z	24 VDC, E-Coil, Metri-Pack 150 with Zener Diode
L	36DS	36 VDC, D-Coil, Dual Spade
L	115AG	115 VAC, D-Coil, DIN 43650
L	115AP	115 VAC, D-Coil, 1/2" Conduit and Dual Lead Wires
L	230AG	230 VAC, D-Coil, DIN 43650
L	230AP	230 VAC, D-Coil, 1/2" Conduit and Dual Lead Wires